

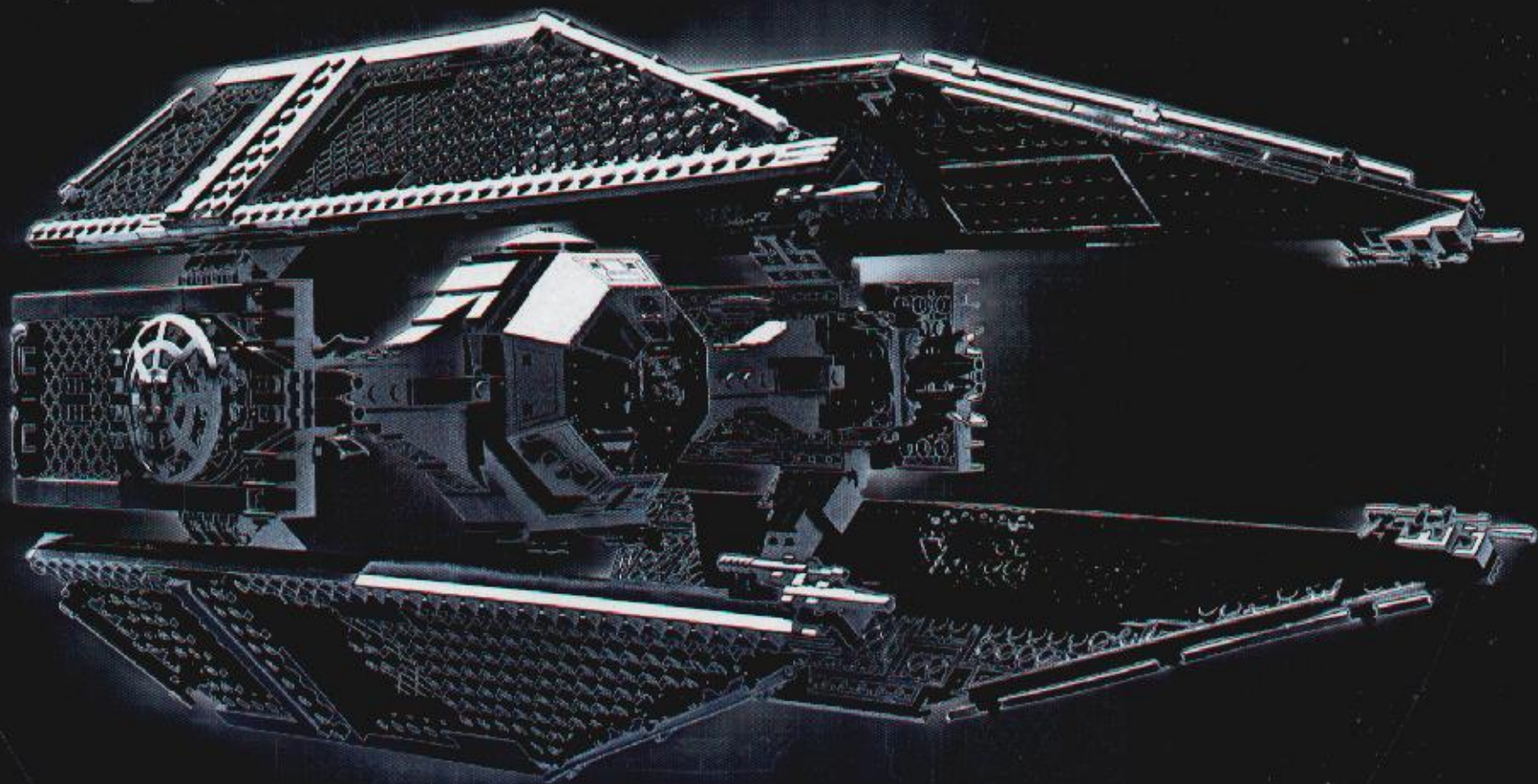
LEGO

ULTIMATE COLLECTOR SERIES

TIE INTERCEPTOR™

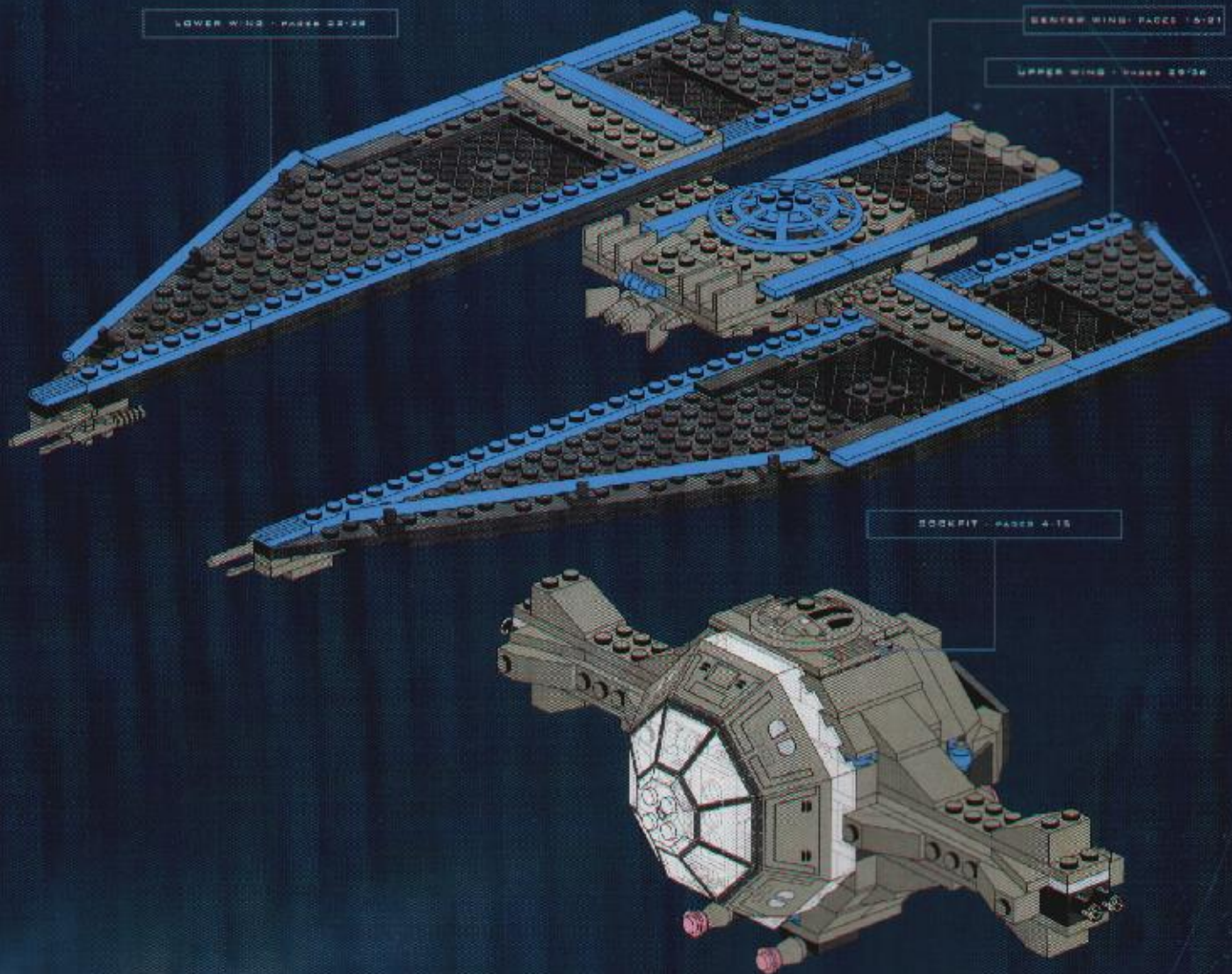
**STAR
WARS**

7 1 8 1



SIGMAR FLEET SYSTEMS

TIE INTERCEPTOR™



COCKPIT - PAGES 4-15

CENTER WING - PAGES 16-21

LOWER WING - PAGES 22-24

UPPER WING - PAGES 25-26

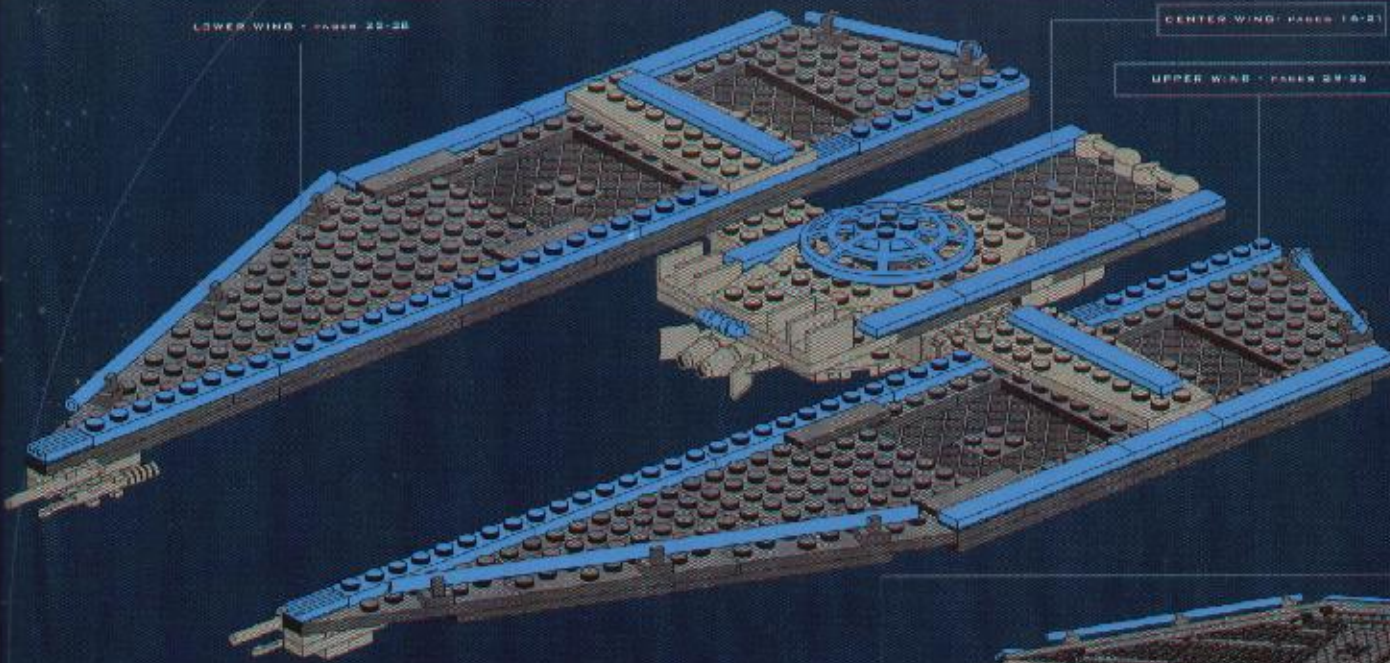
REAR FALCON - PAGES 27-28

INTO - PAGES 26-27

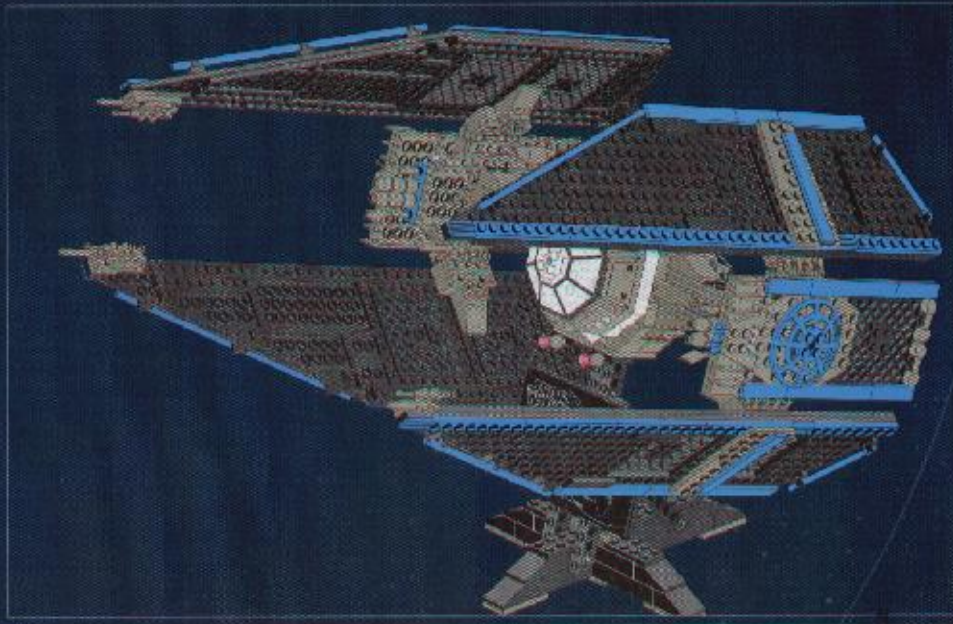
LOWER WING - PAGES 25-28

CENTER WING - PAGES 16-21

UPPER WING - PAGES 29-32



PEDESTAL - PAGES 37-43





COCKPIT - PAGES 4-18

CENTER WING - PAGES 19-21

LOWER WING - PAGES 22-28

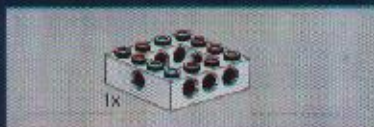
UPPER WING - PAGES 29-35

PEDestal - PAGES 37-43

INFO - PAGES 44-49



1



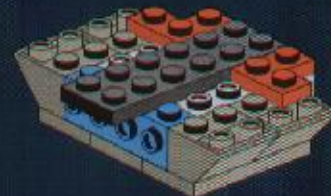
2

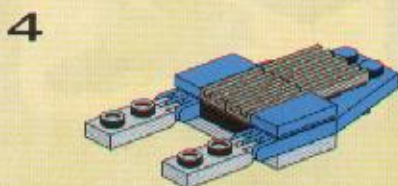
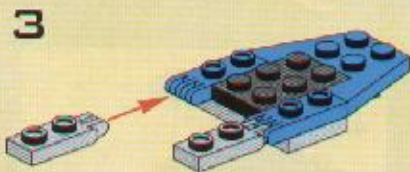
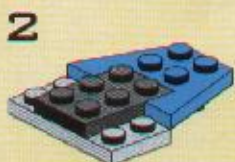


3

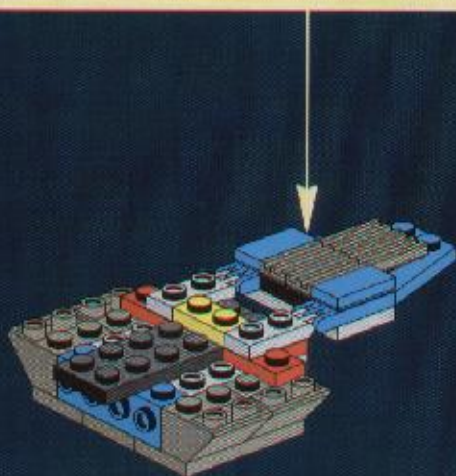


4

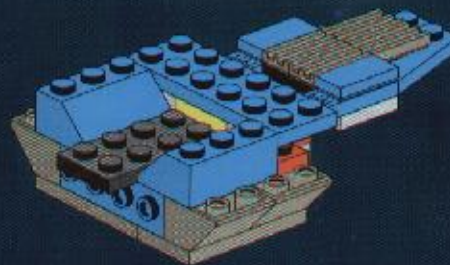




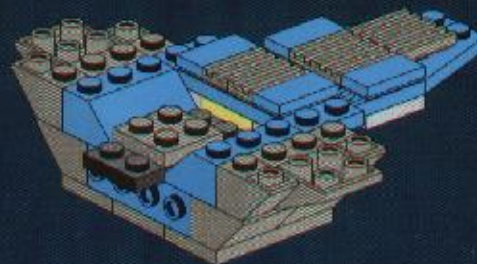
5



6



7



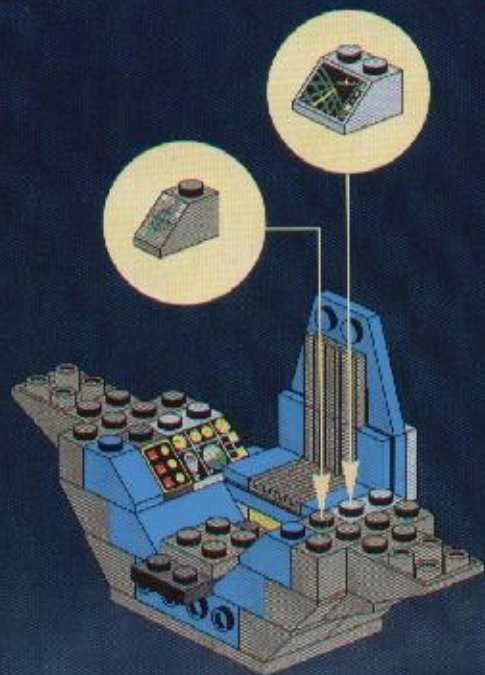


SIENAR FLEET SYSTEM

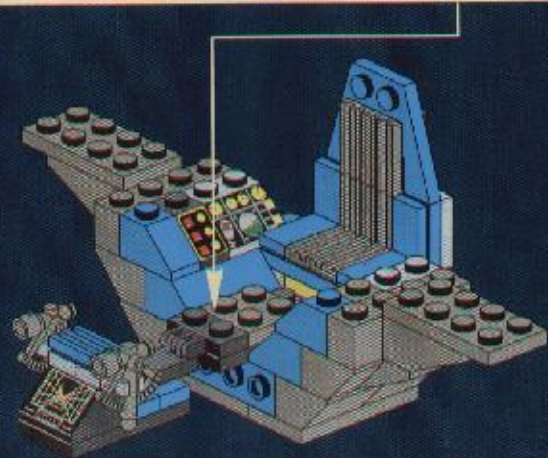
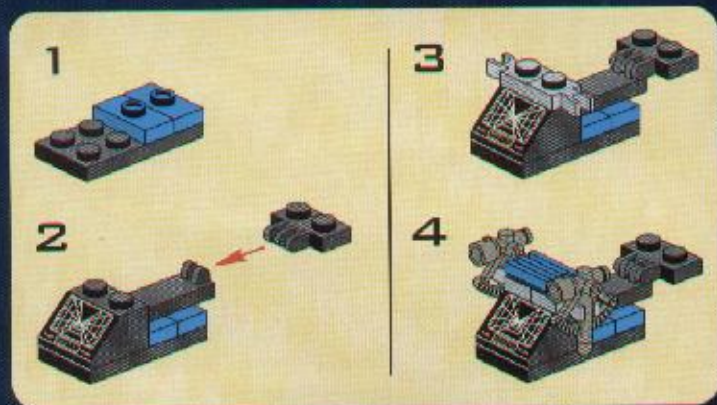
TIE INTERCEPTOR™



8

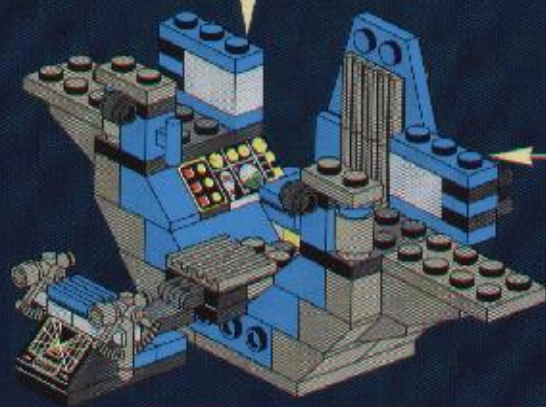
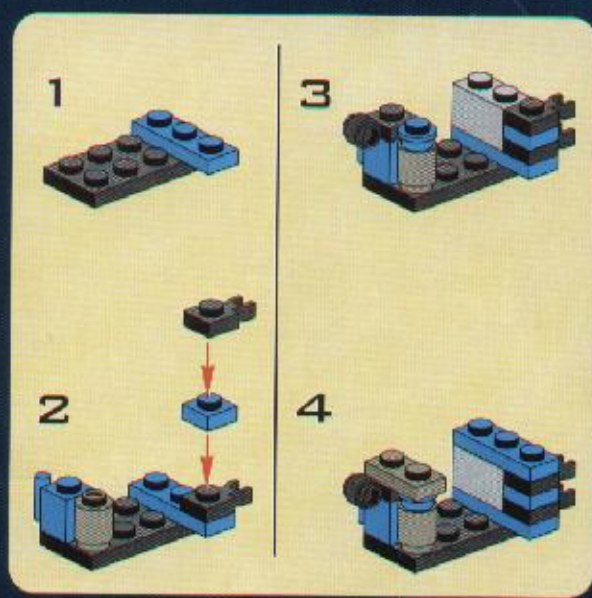
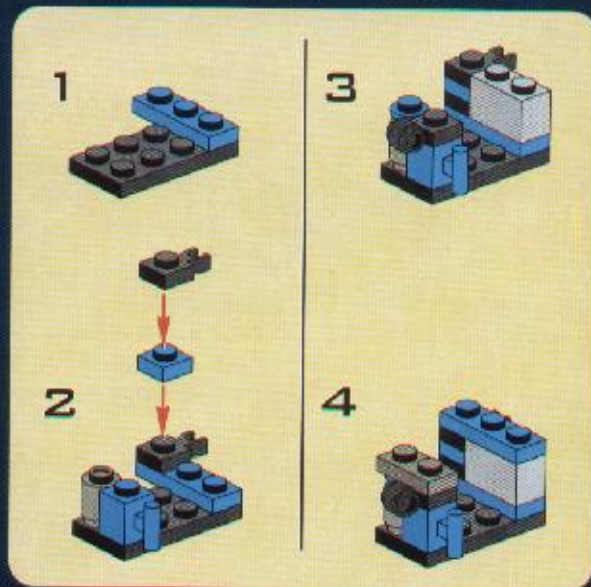


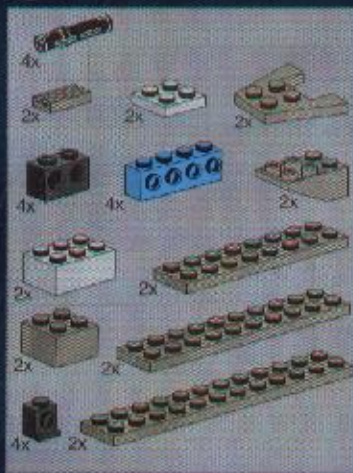
9



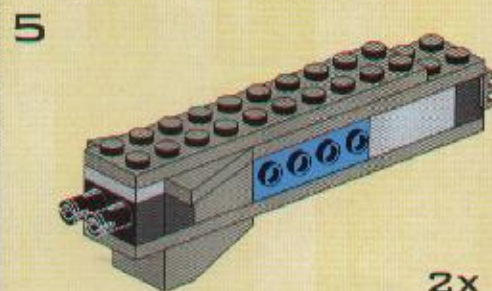
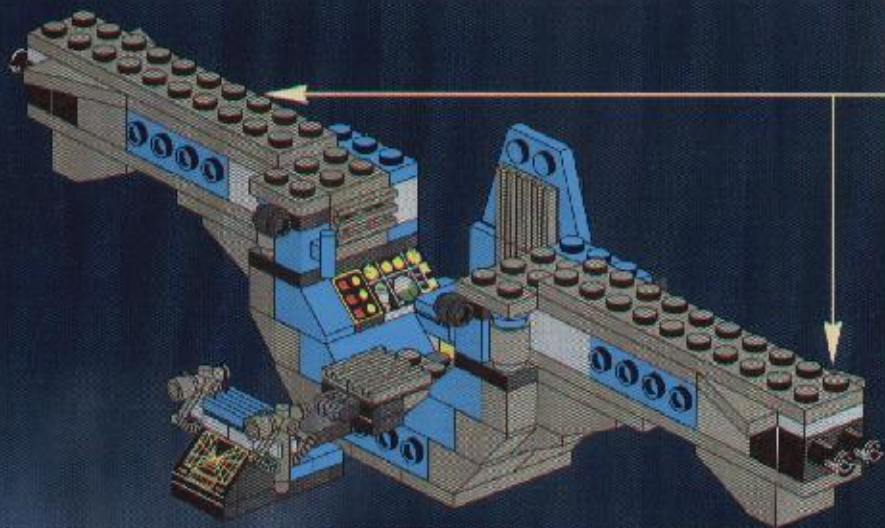
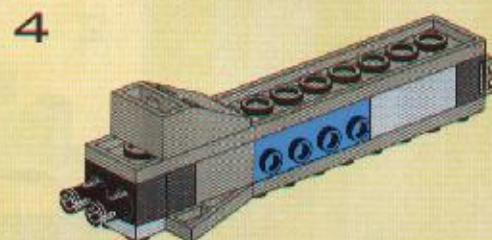
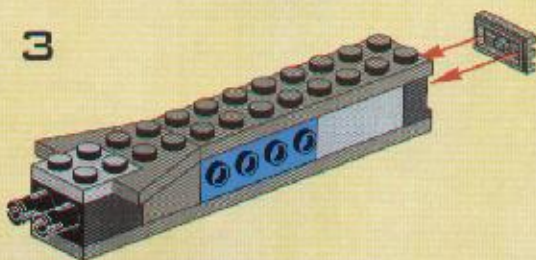
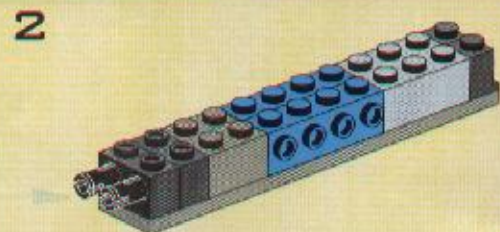
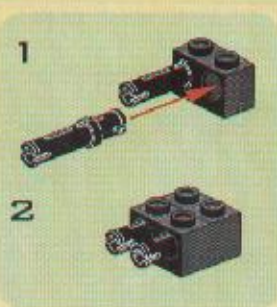
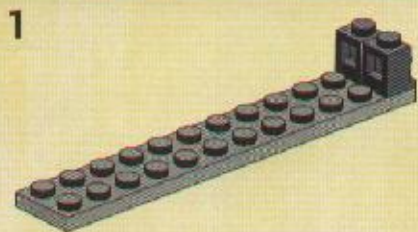


10



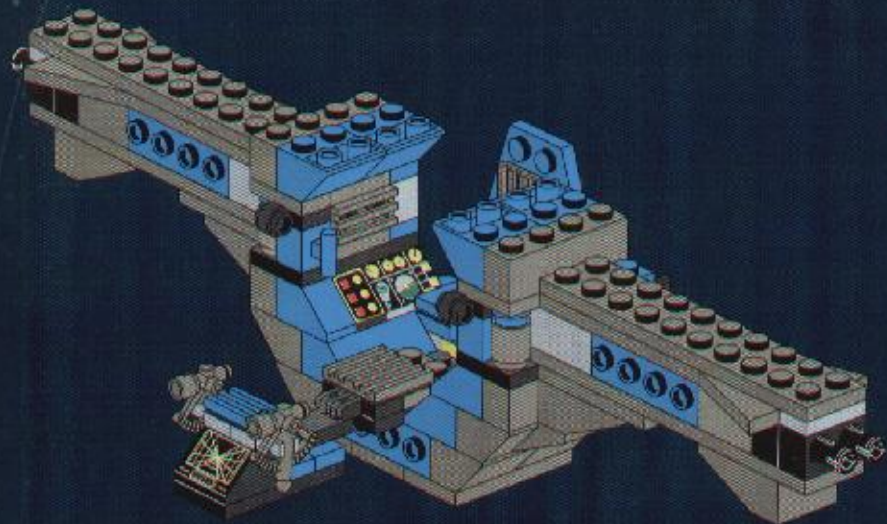


11

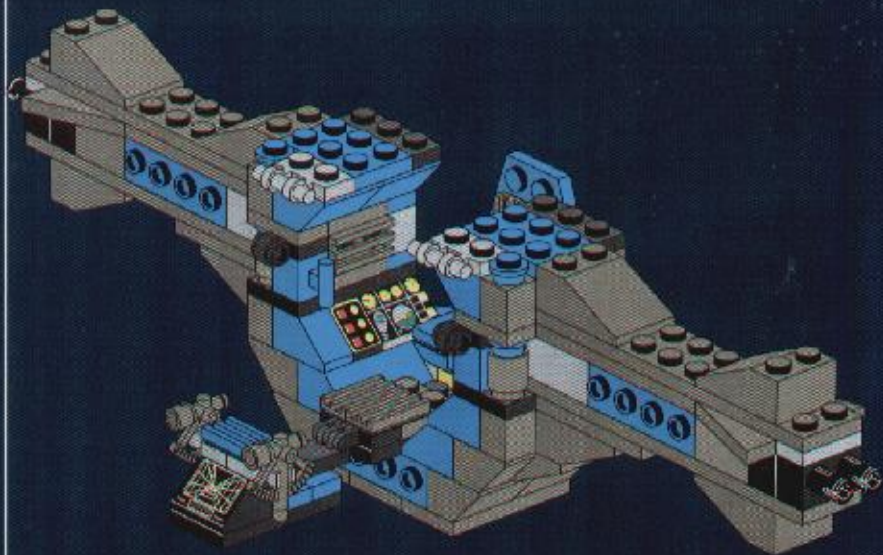




12



13



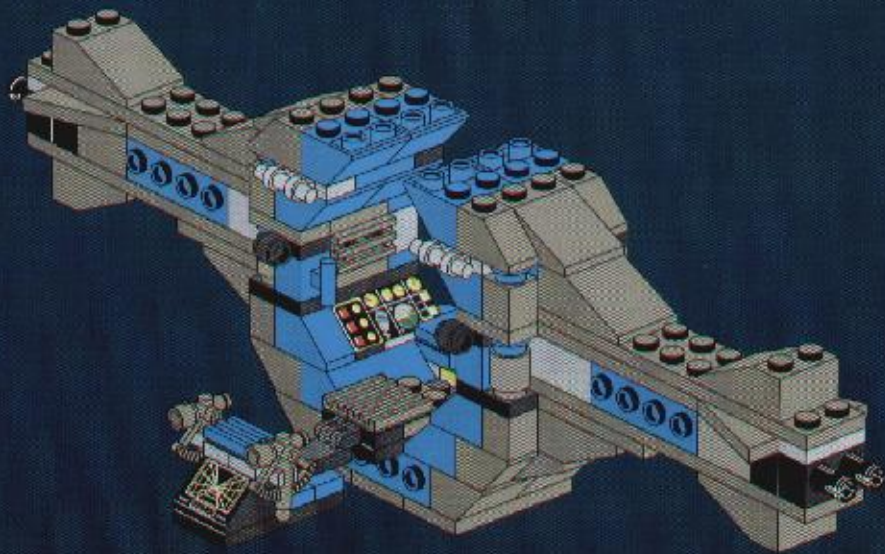


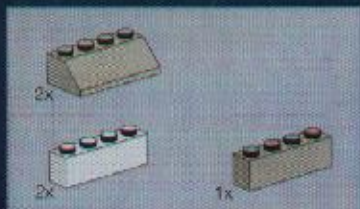
SIENAR FLEET SYSTEMS

TIE INTERCEPTOR™

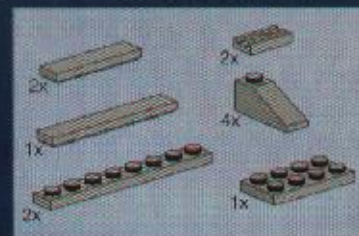
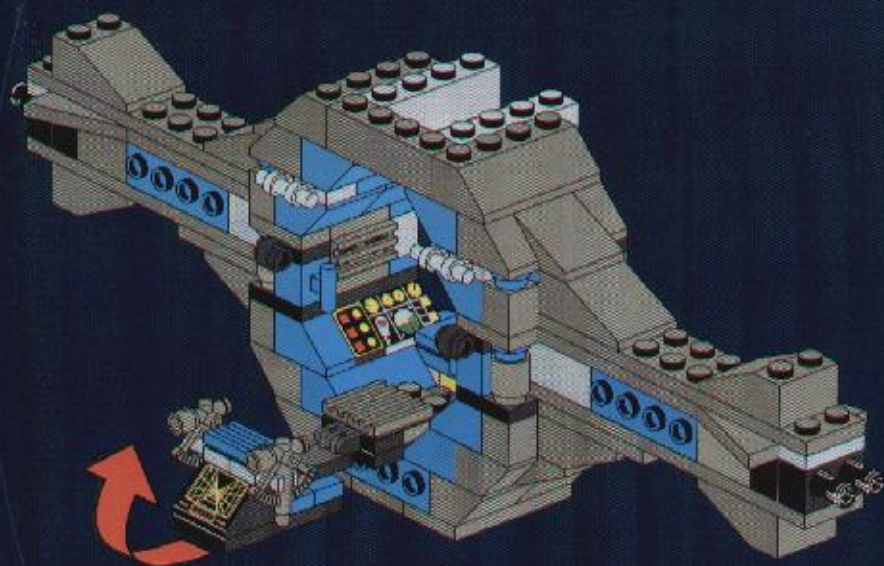


14

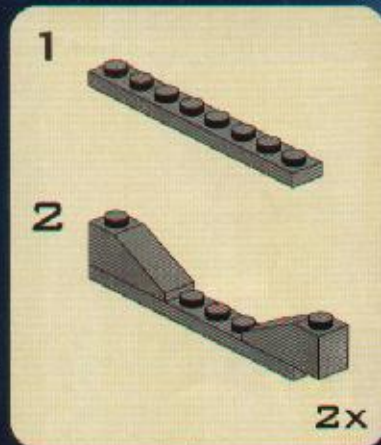
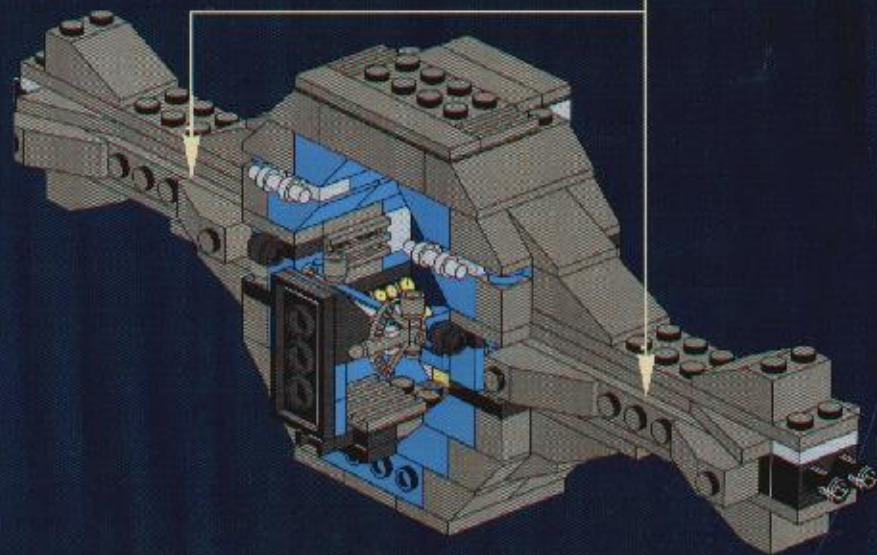




15



16



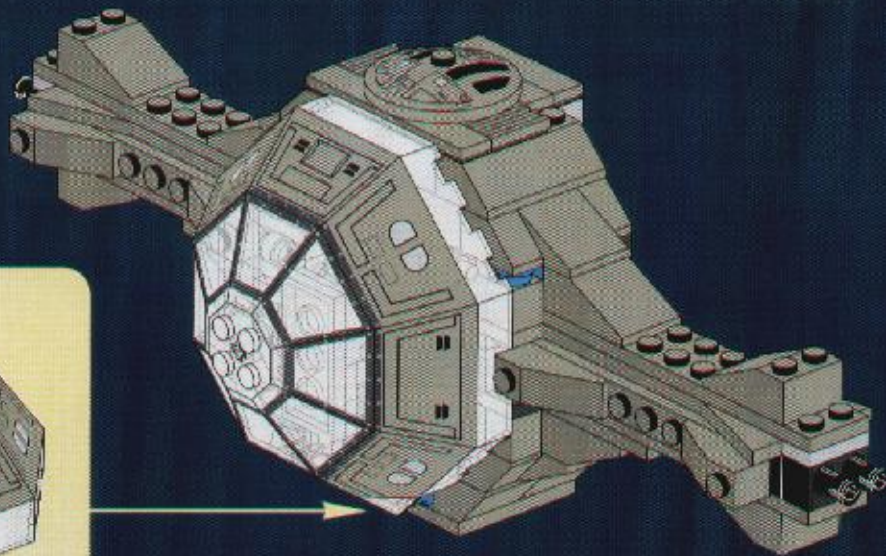
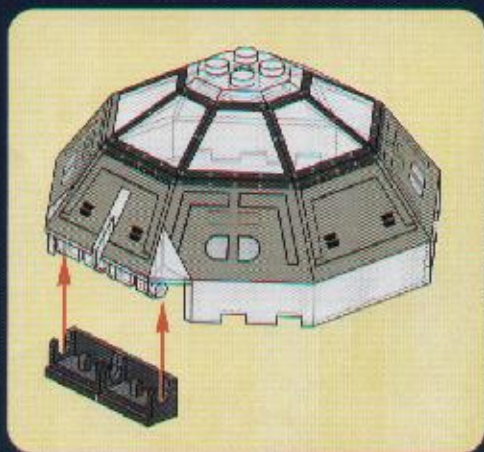


BIENAR FLEET SYSTEMS

TIE INTERCEPTOR™



17



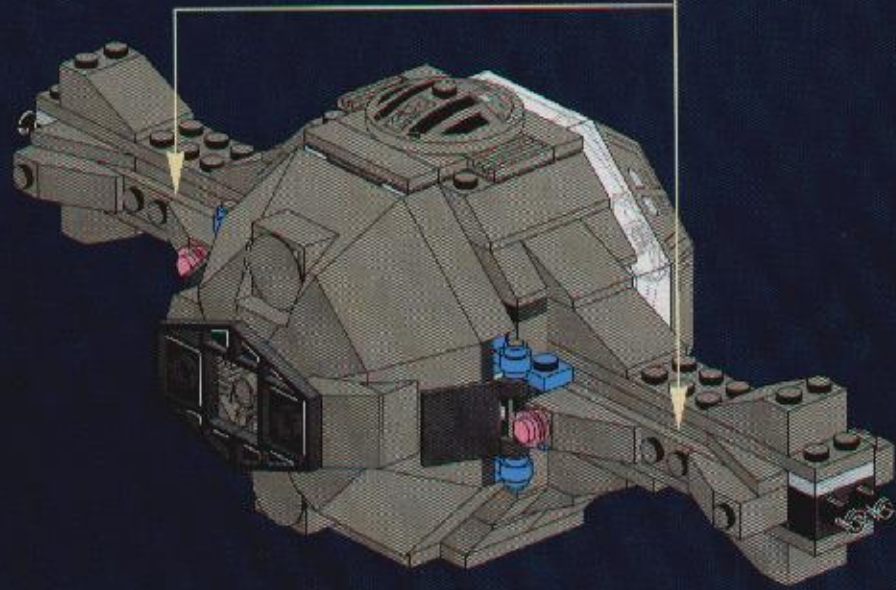
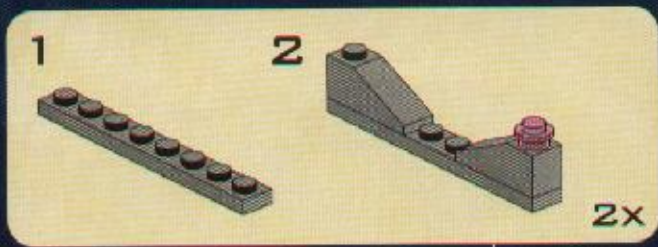


SIGNAL FLEET SYSTEMS

TIE INTERCEPTOR™

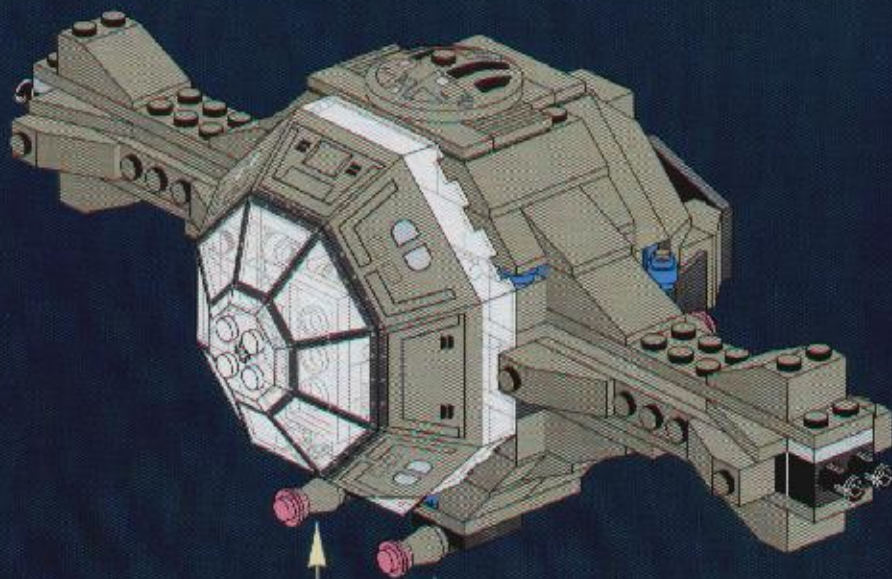


19





20





COCKPIT - PAGES 21-23

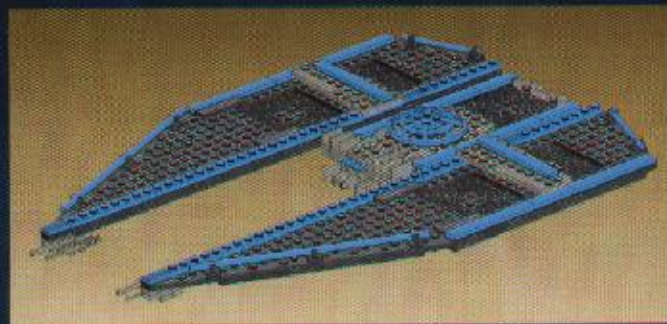
CENTER WING - PAGES 15-21

LOWER WING - PAGES 22-28

UPPER WING - PAGES 29-35

PEDESTAL - PAGES 37-46

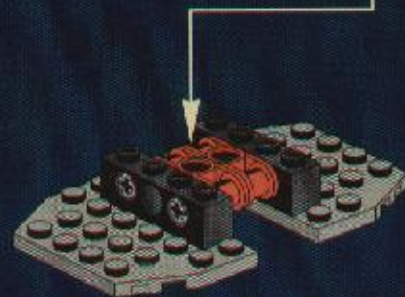
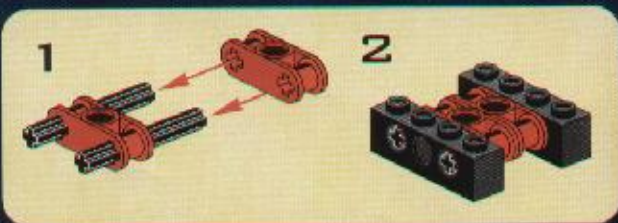
INFO - PAGES 56-57



1

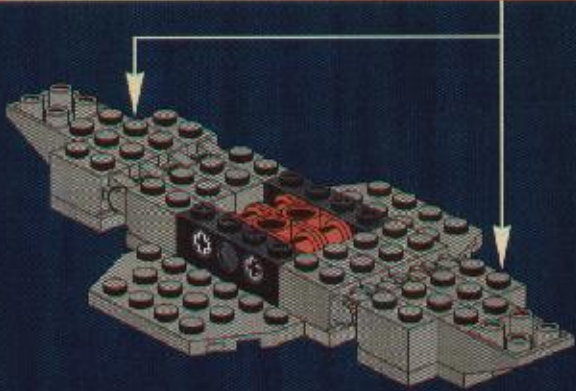
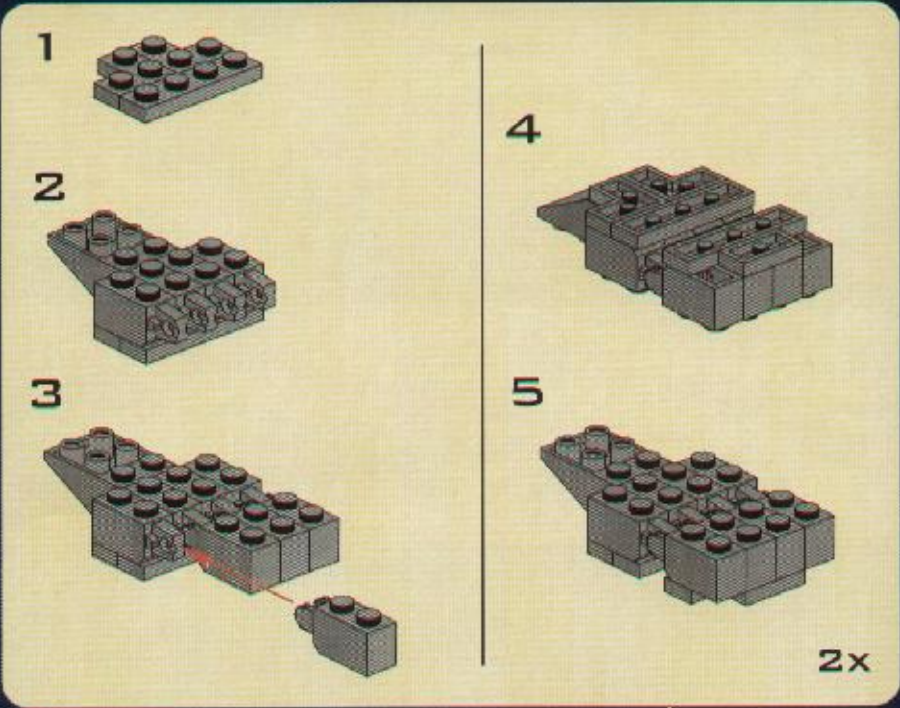


2



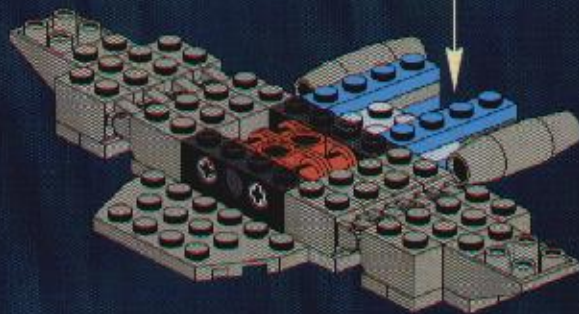
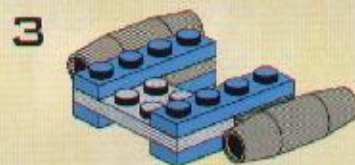
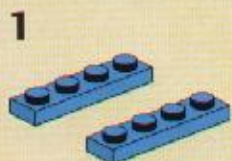


3





4

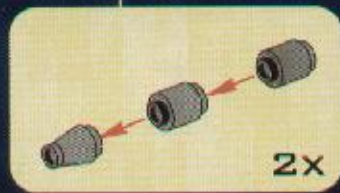
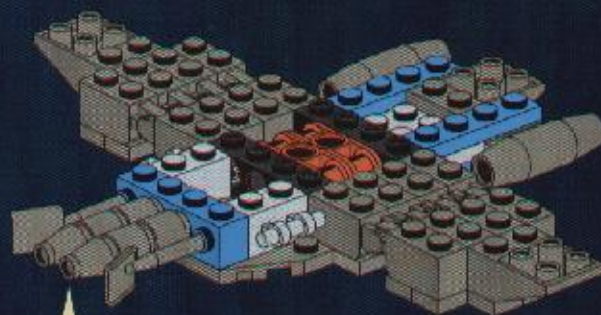


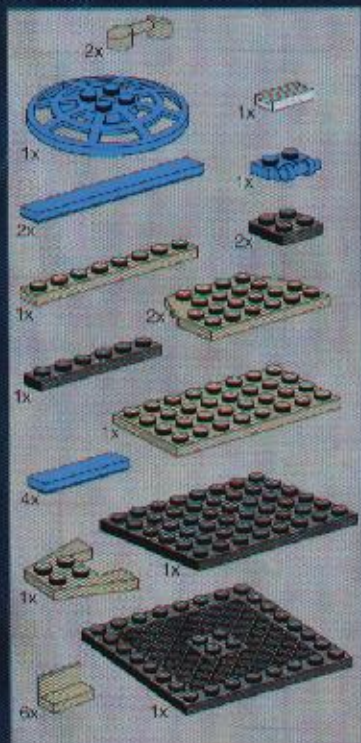


5

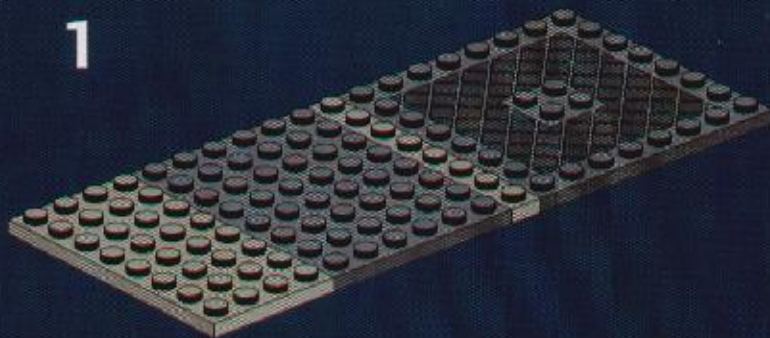


6

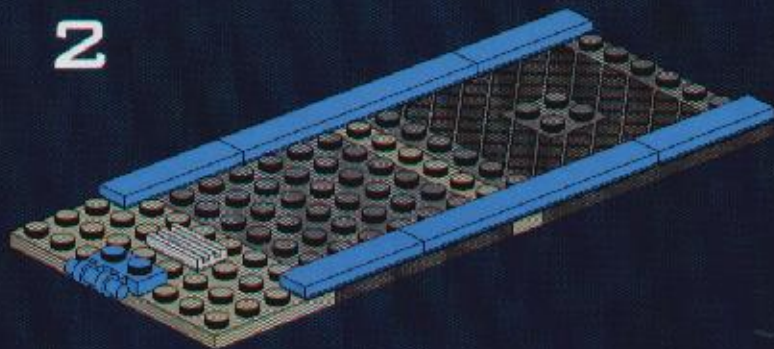




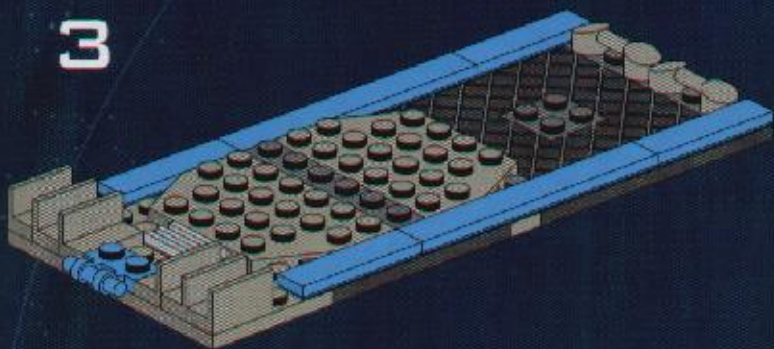
1



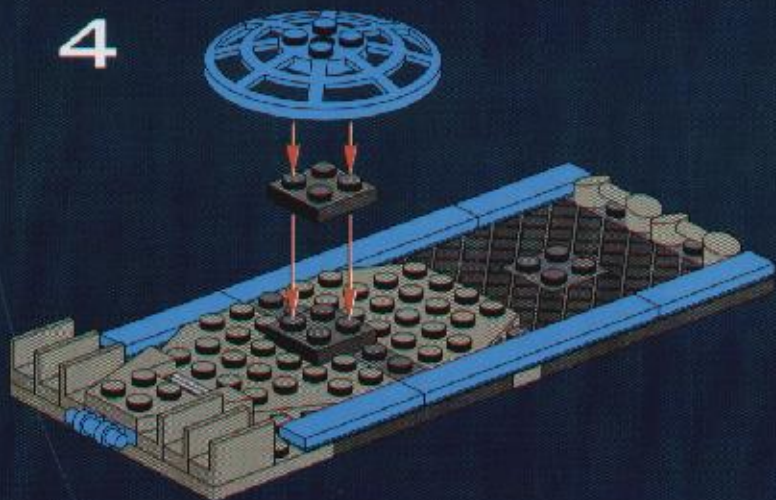
2



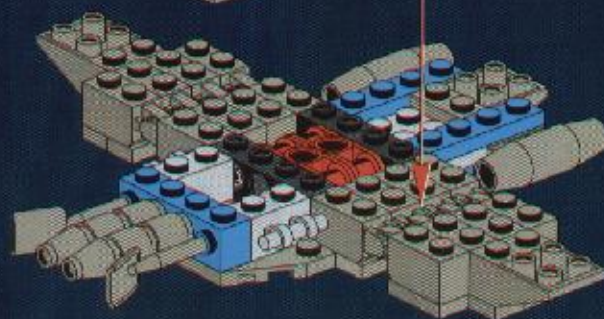
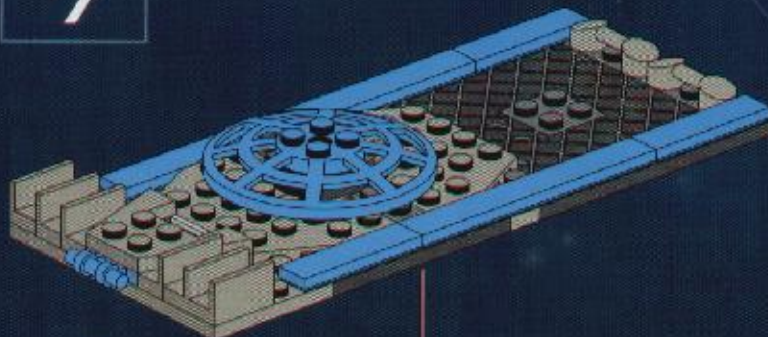
3



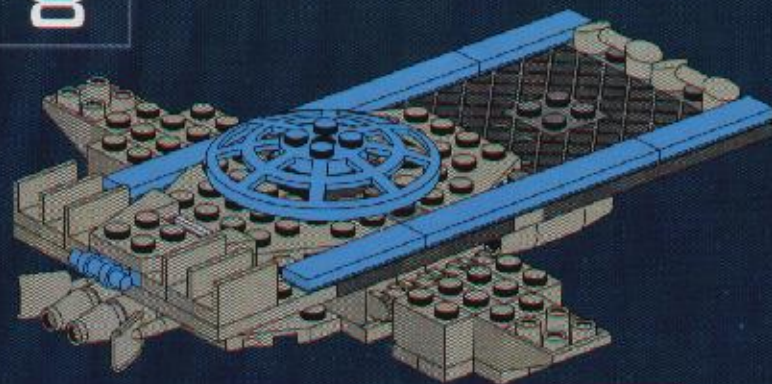
4

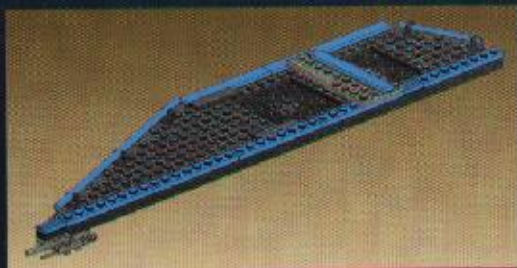


7

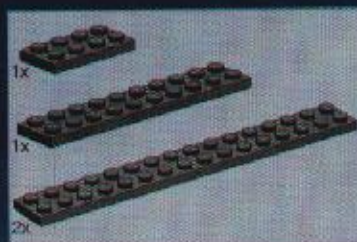
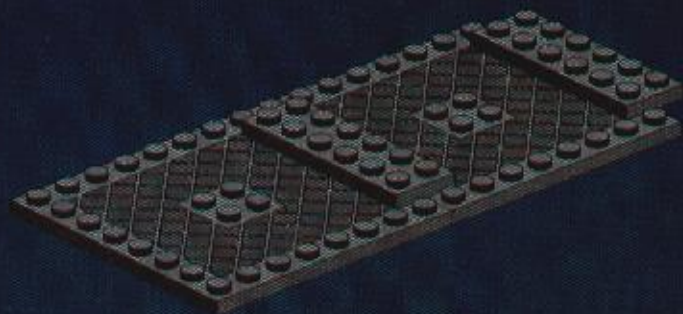


8

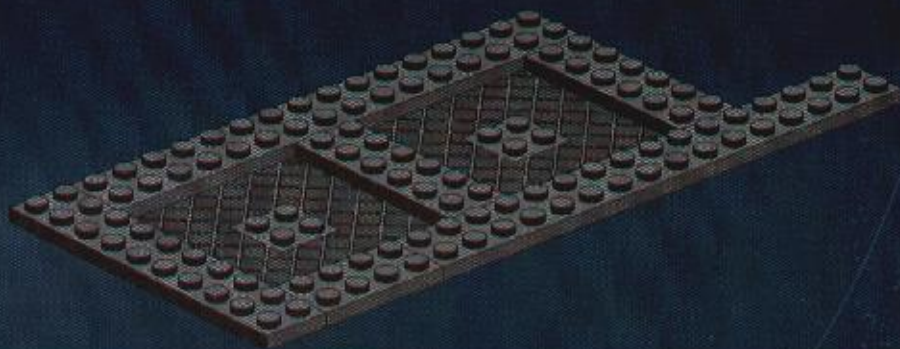




1



2



COCKPIT - PAGES 4-5

LOWER WING - PAGES 16-18

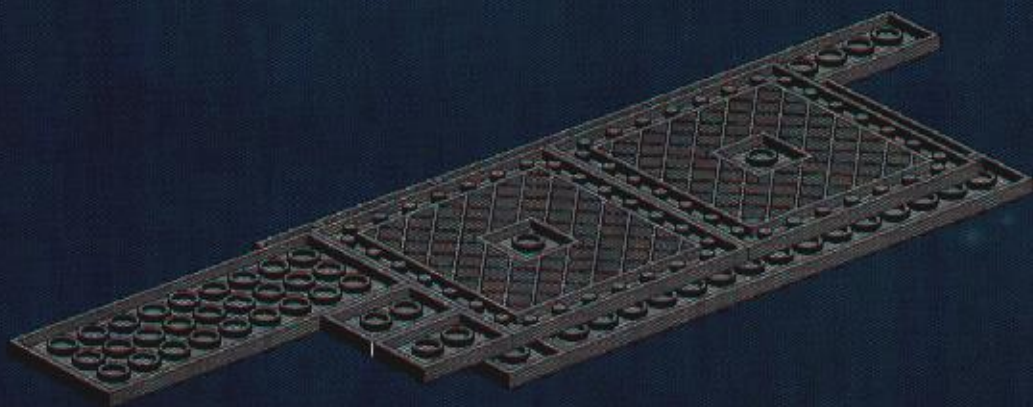
UPPER WING - PAGES 24-26

FOCUSTAL - PAGES 37-39

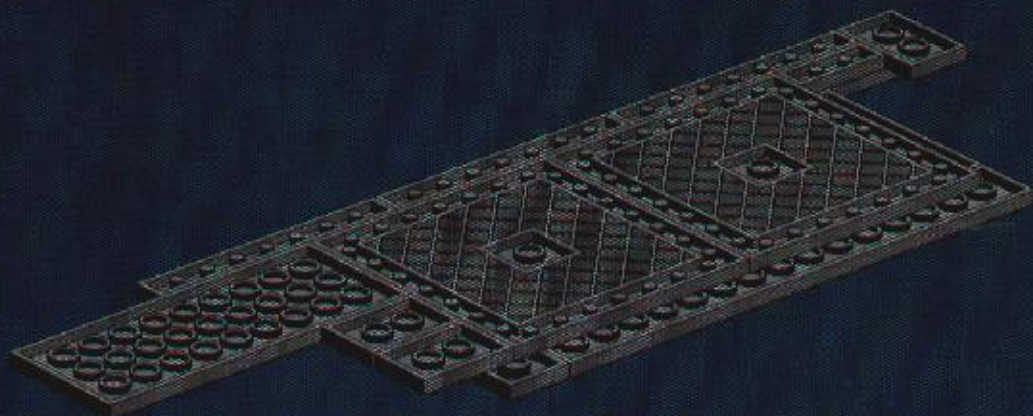
INFO - PAGES 40-41



3

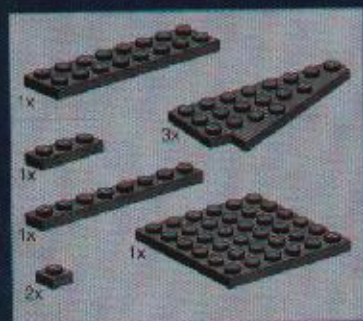
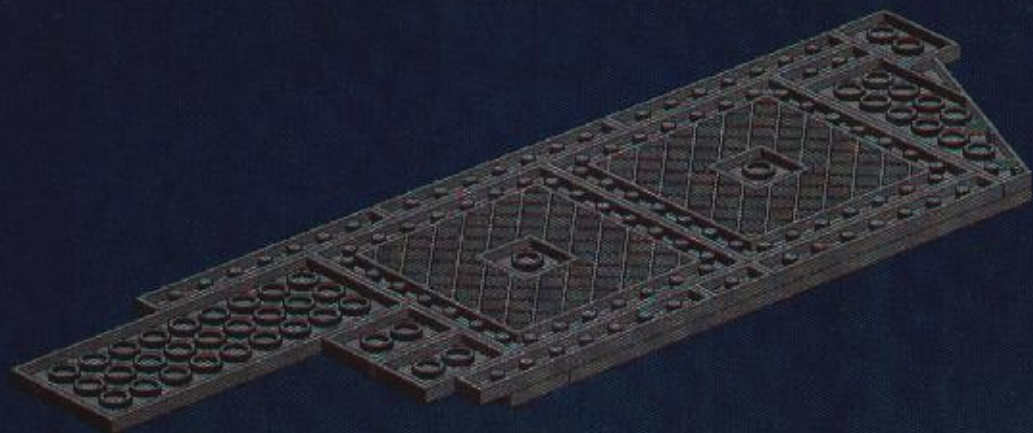


4

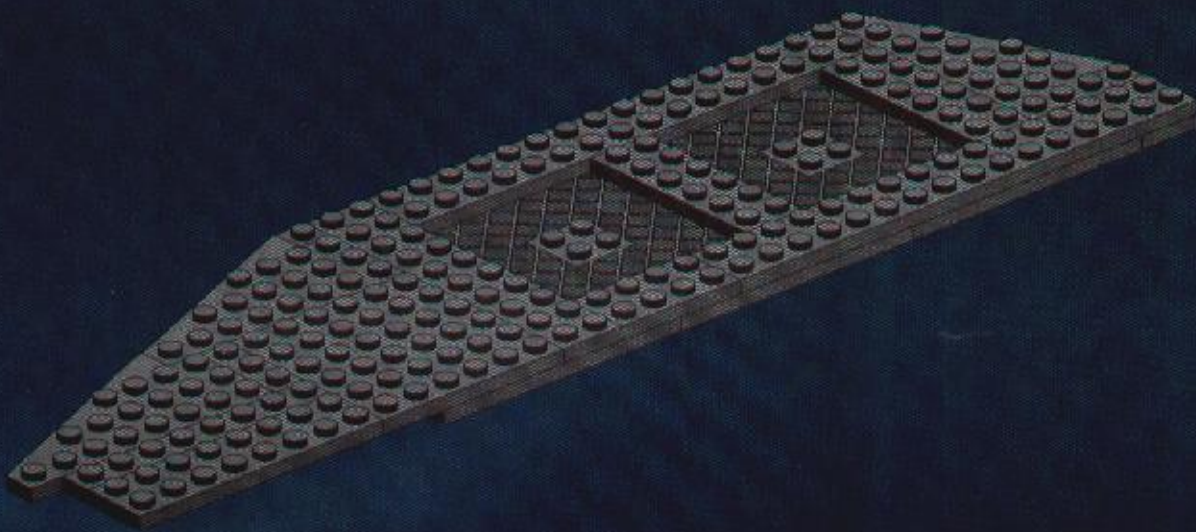


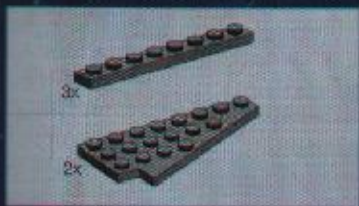


5

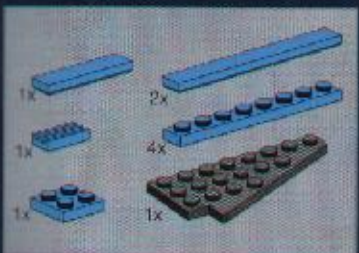
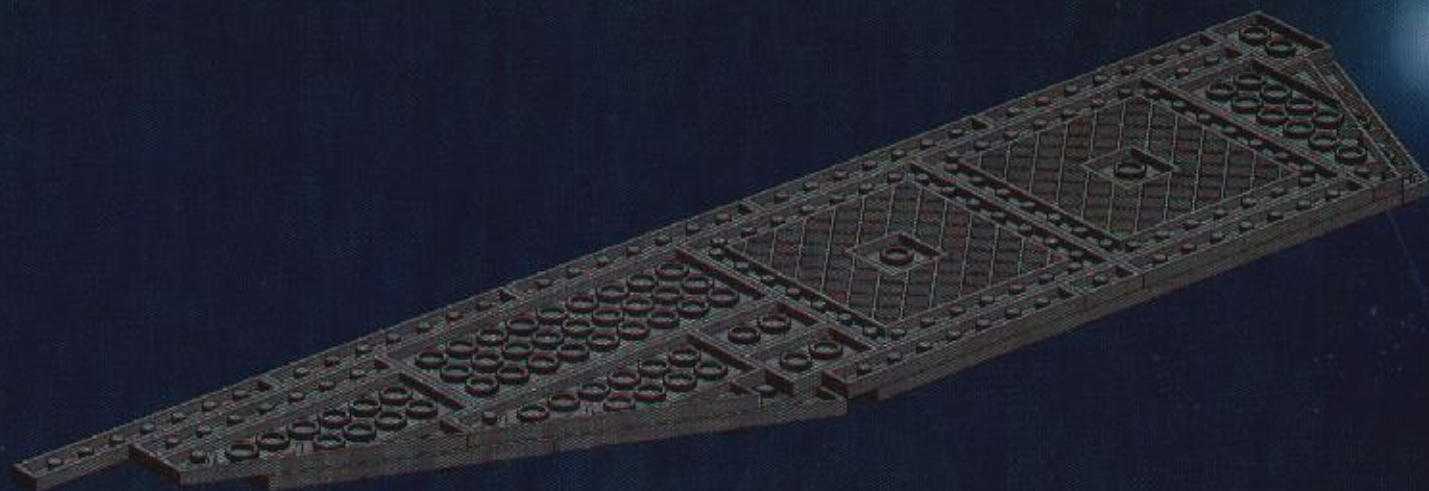


6

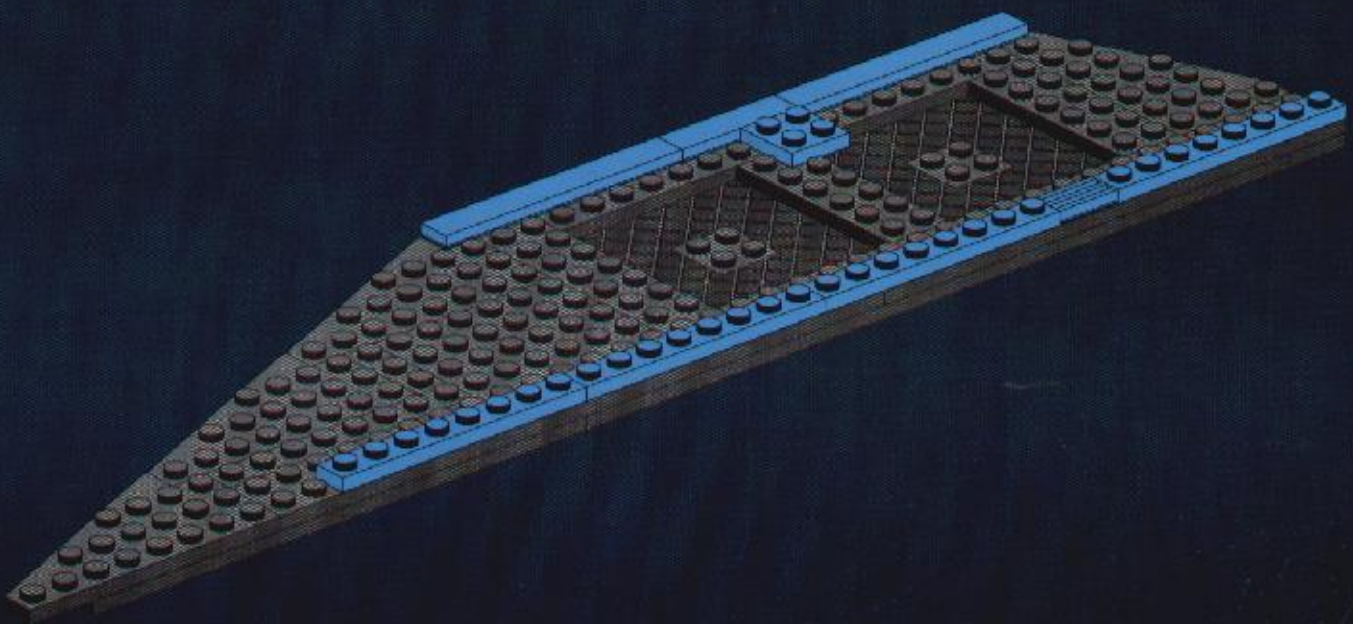




7



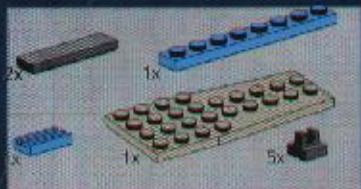
8



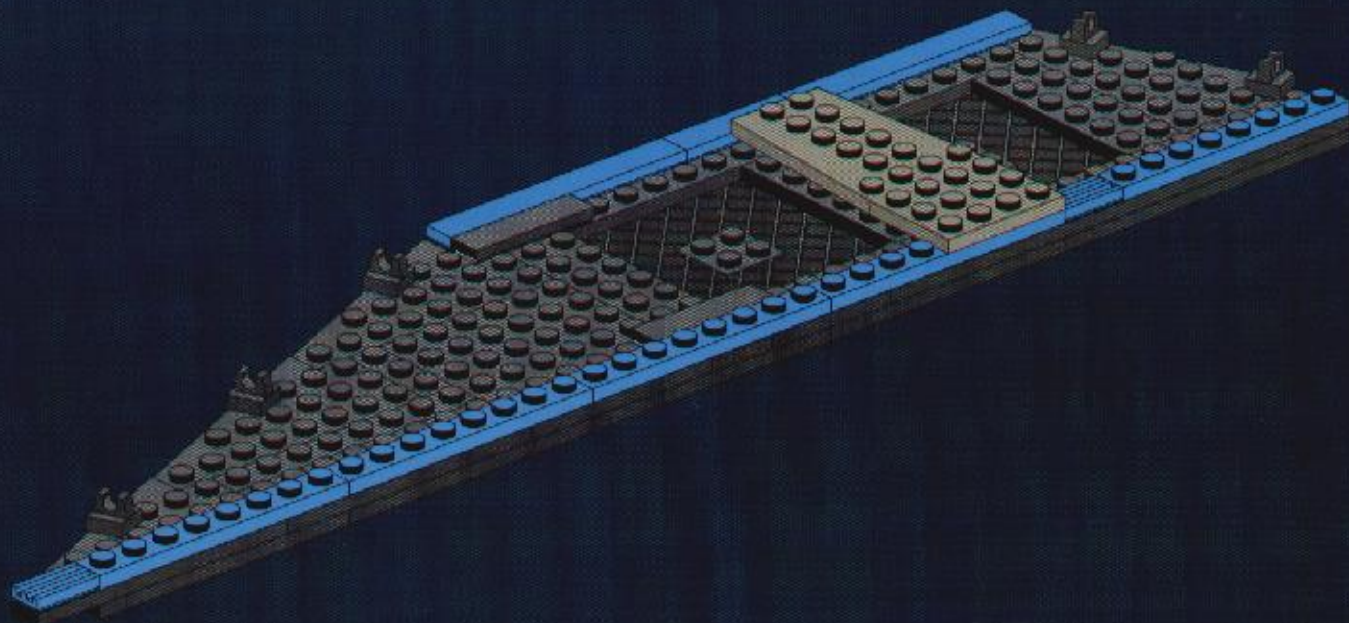


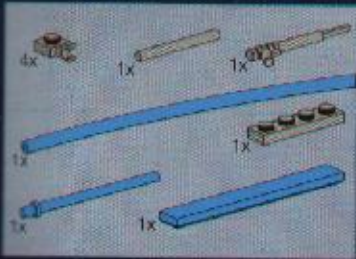
REAR FLEET SYSTEM

TIE INTERDICTOR™

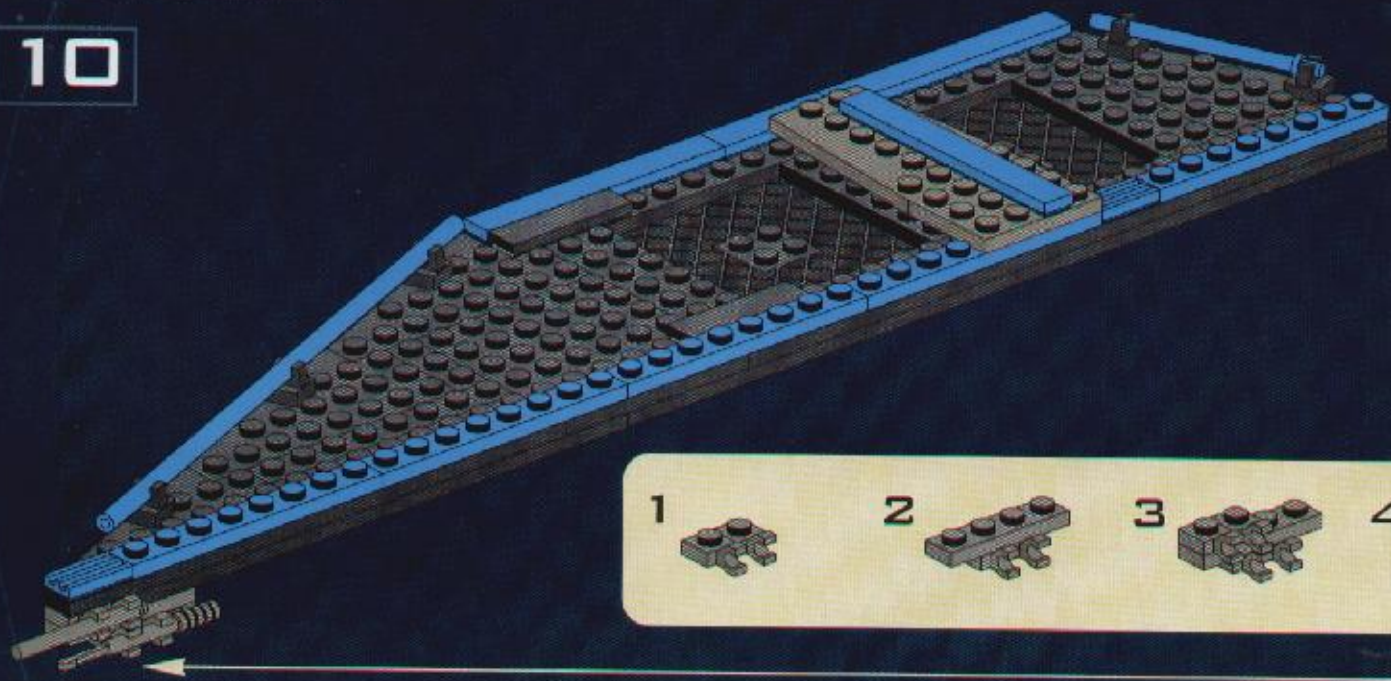


9





10

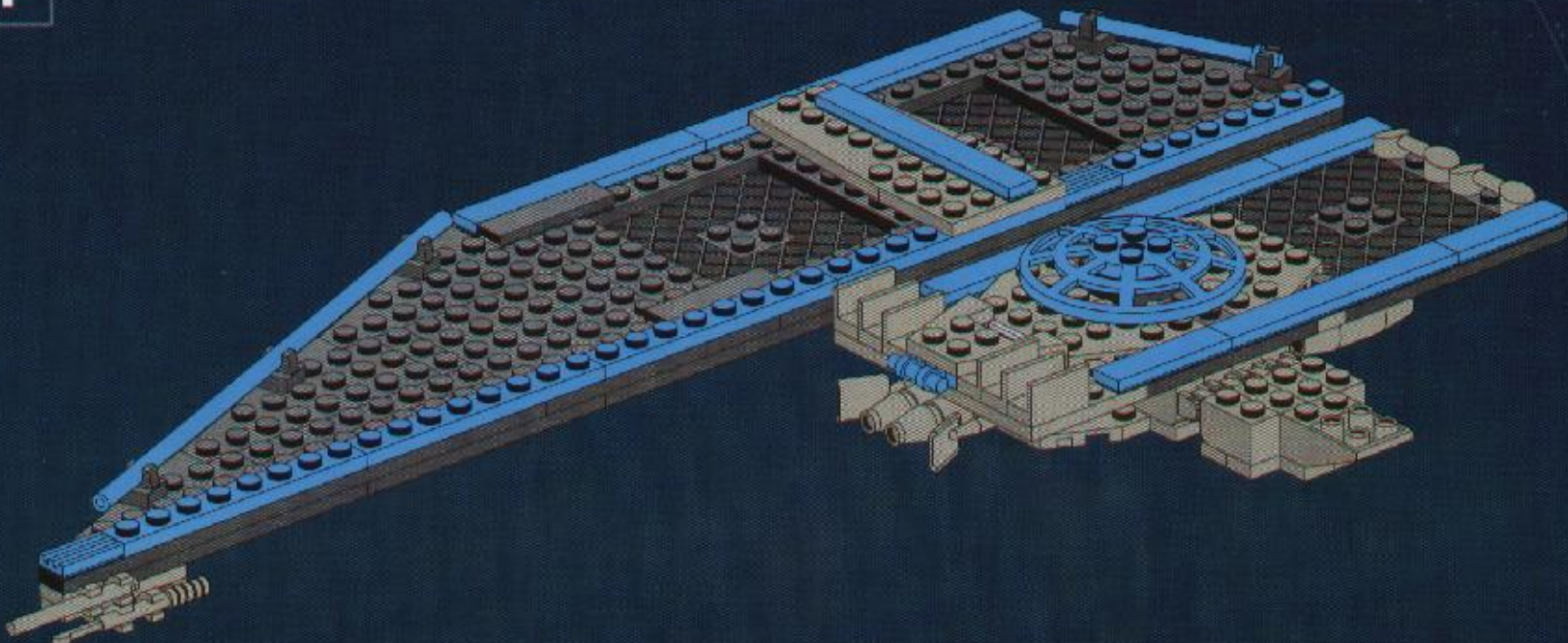




BIENAR FLEET SYSTEMS

TIE INTERCEPTOR™

11





COCKPIT - PAGES 4-15

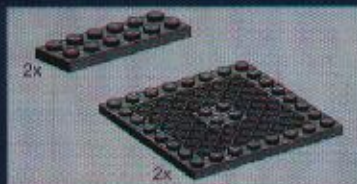
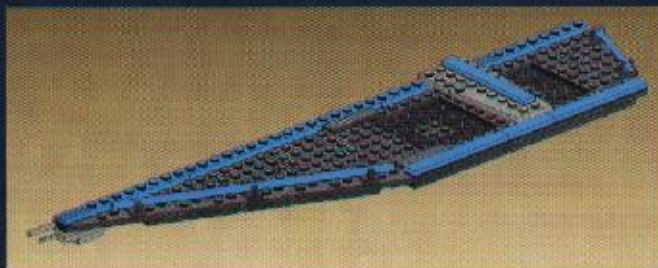
CENTER WING - PAGES 16-21

LOWER WING - PAGES 22-28

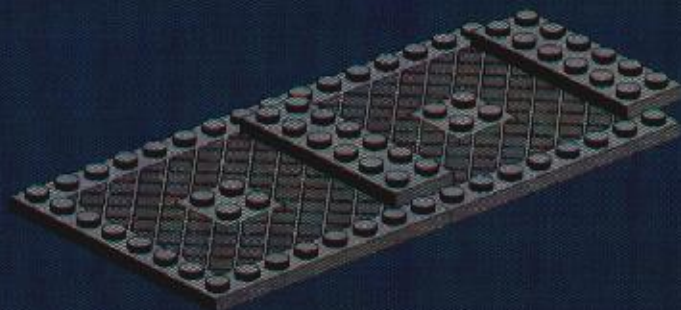
UPPER WING - PAGES 29-36

PEDestal - PAGES 37-48

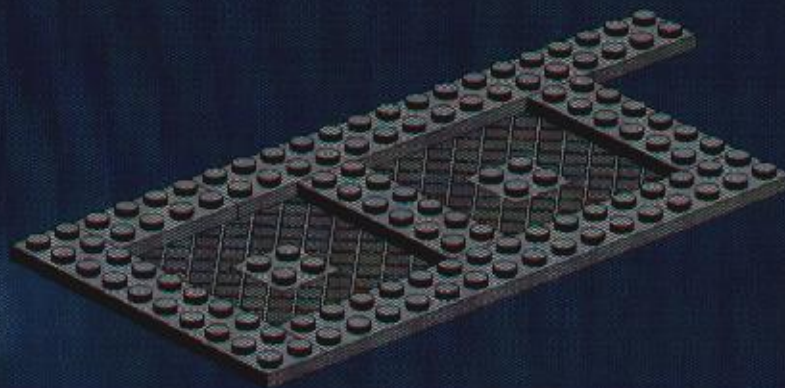
INFO - PAGES 46-47



1



2



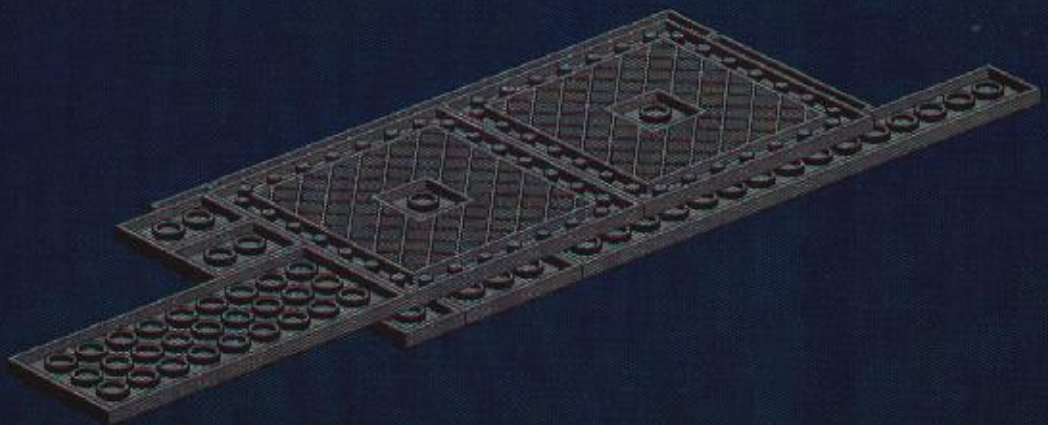


SENAH FLEET SYSTEMS

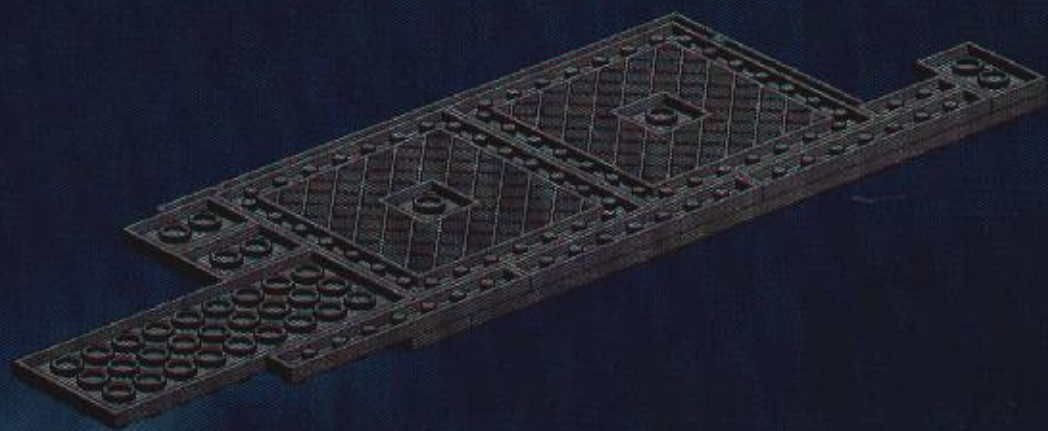
TIE INTERCEPTOR™

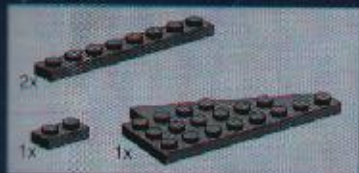


3

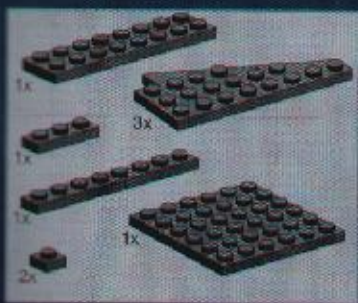
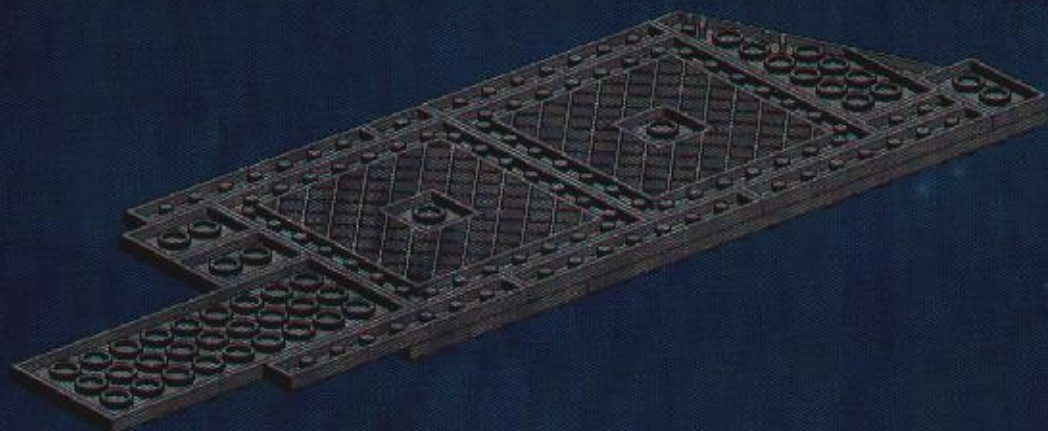


4

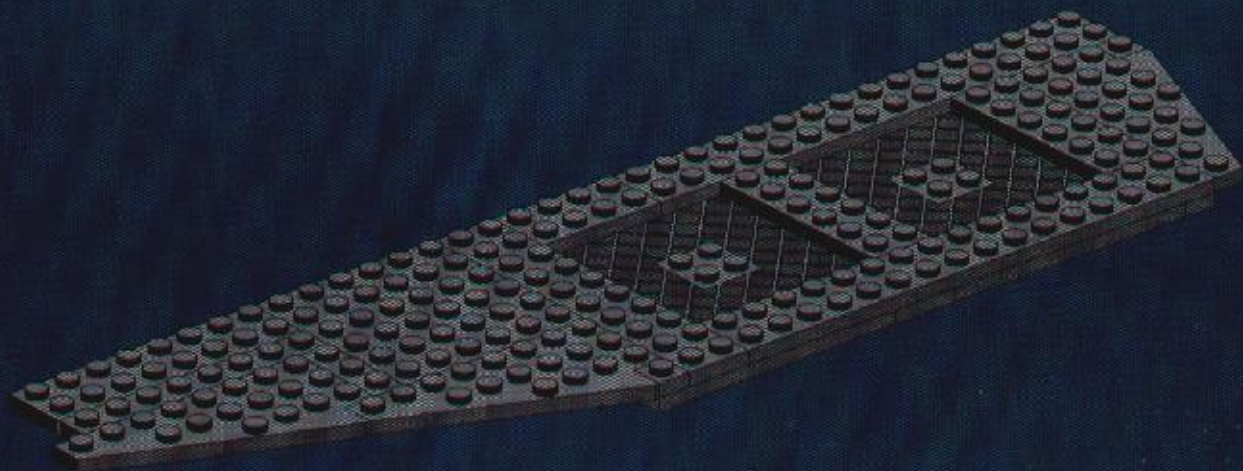




5

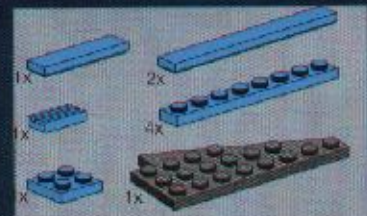
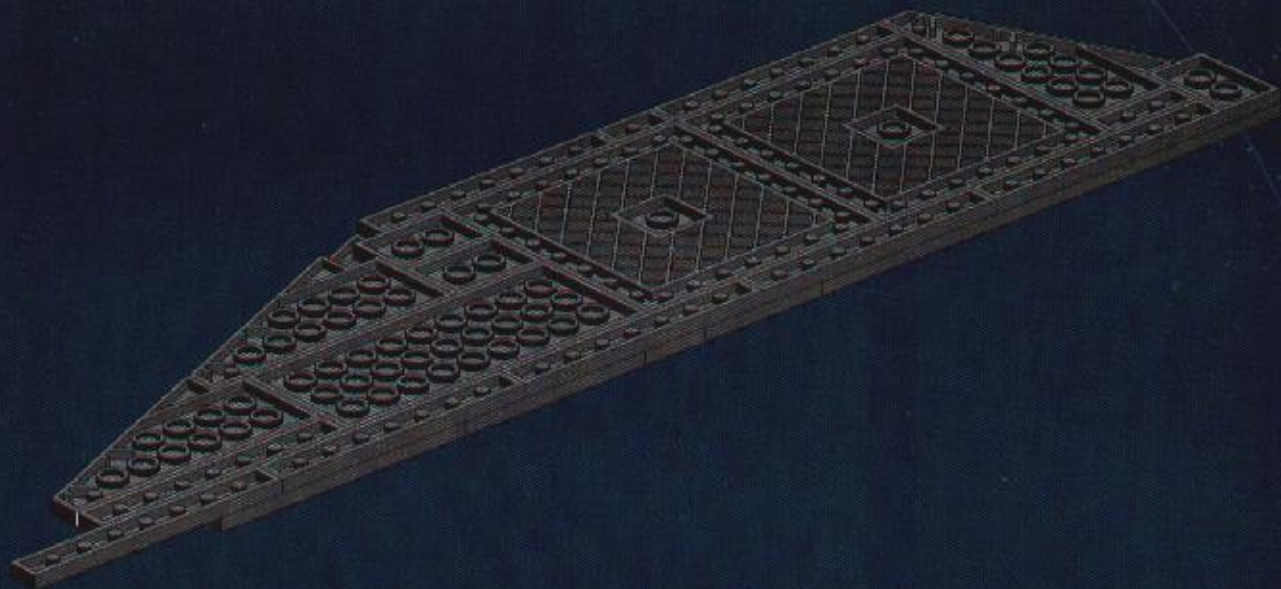


6

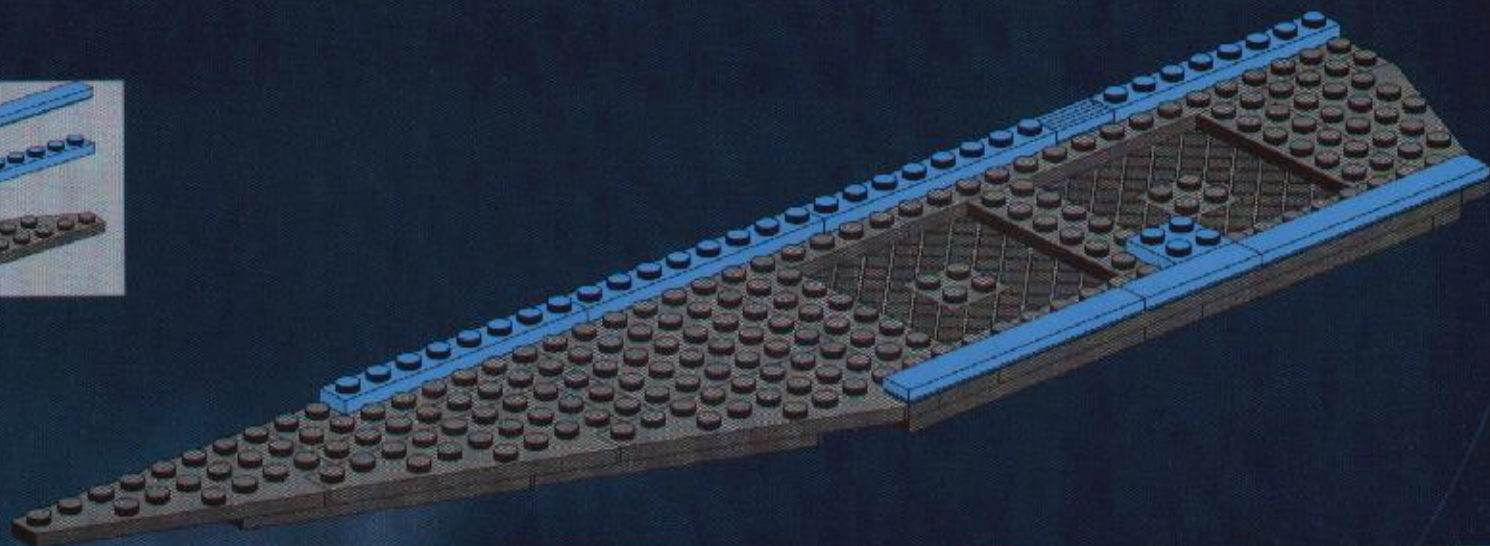


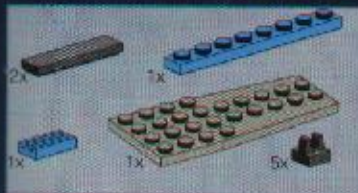


7

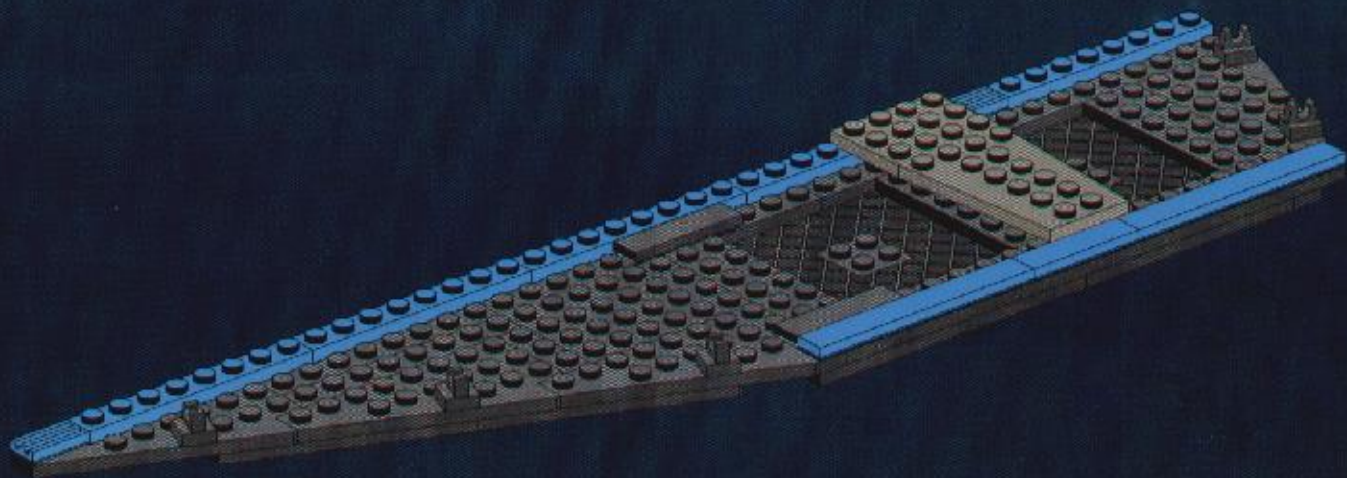


8





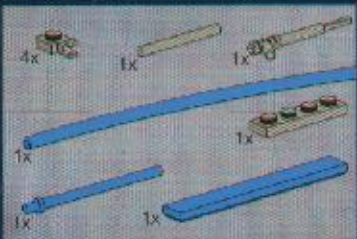
9



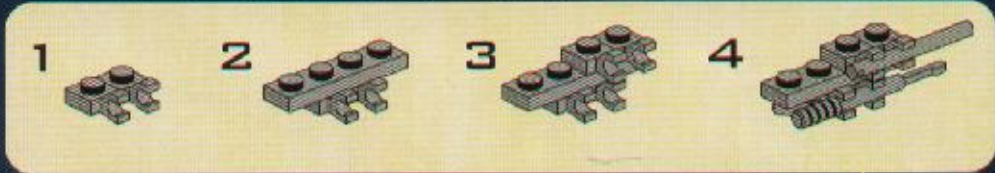
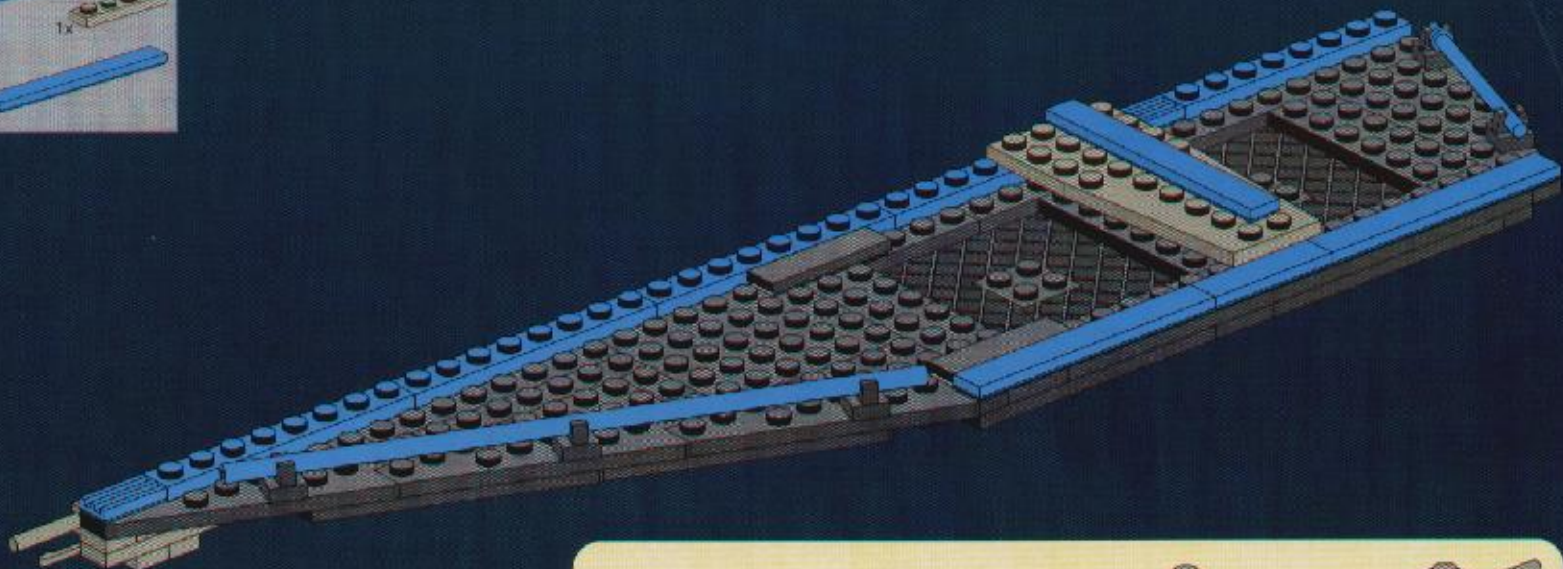


BIGGER FLEET SYSTEMS

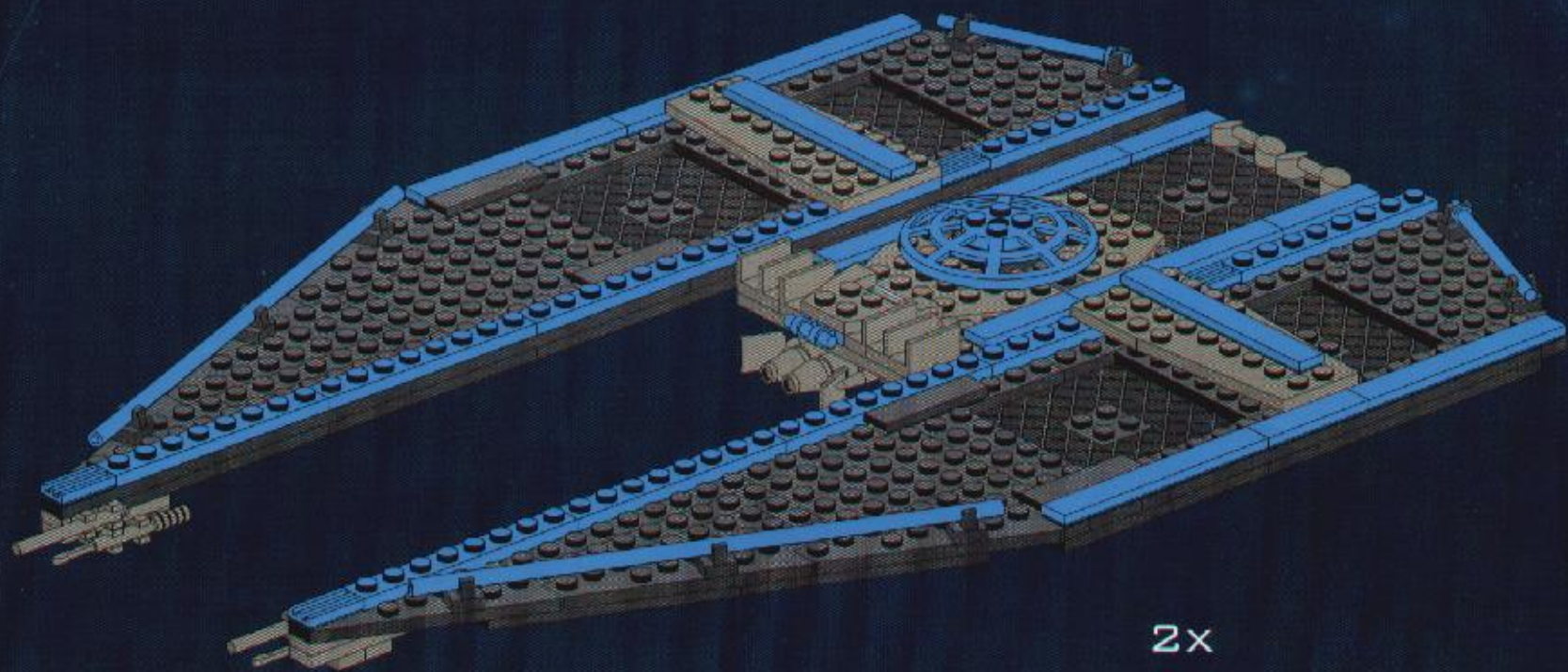
TIE INTERCEPTOR™



10



11

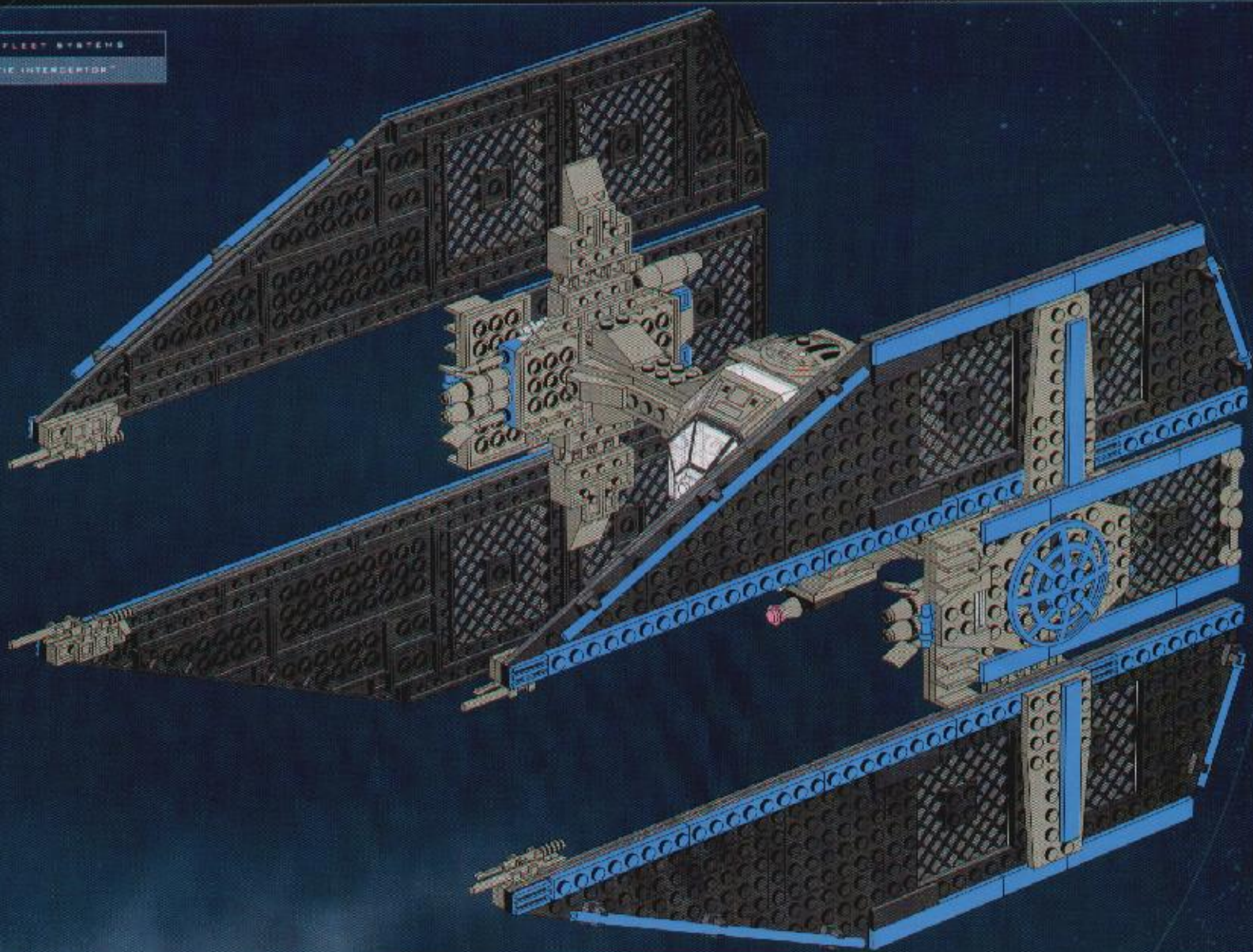


2x



SINAR FLEET SYSTEMS

TIC INTERCEPTOR™



SIGMA FLEET SYSTEMS

TIE HYPERDEPTON™



DECK PIT - PAGES 4-15

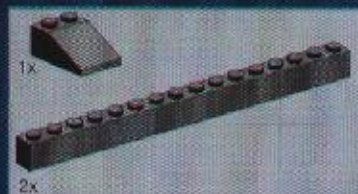
CENTER WING - PAGES 15-2

LOWER WING - PAGES 23-28

UPPER WING - PAGES 29-36

PEDESTAL - PAGES 37-43

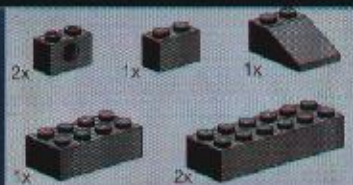
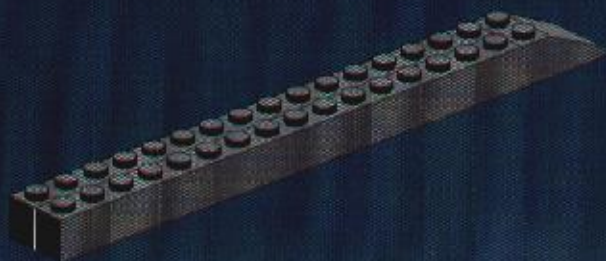
INFO - PAGES 45-47



1x

2x

1



2x

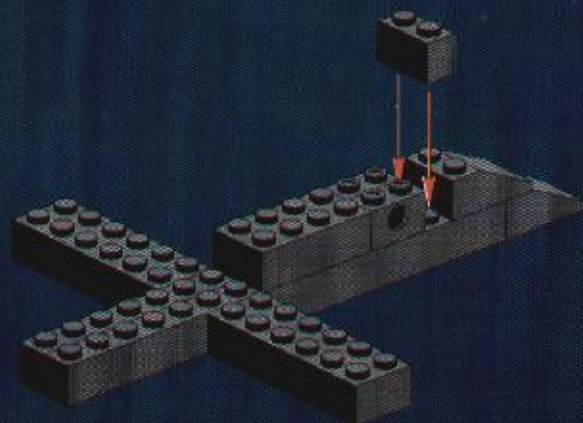
1x

1x

1x

2x

2



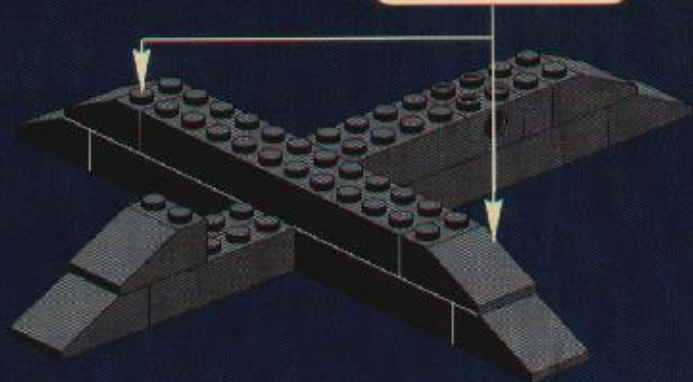
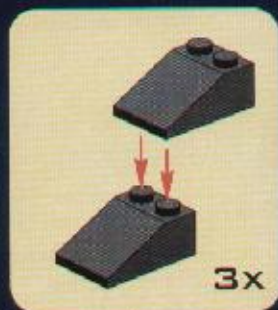


SEPARATIST FLEET SYSTEM

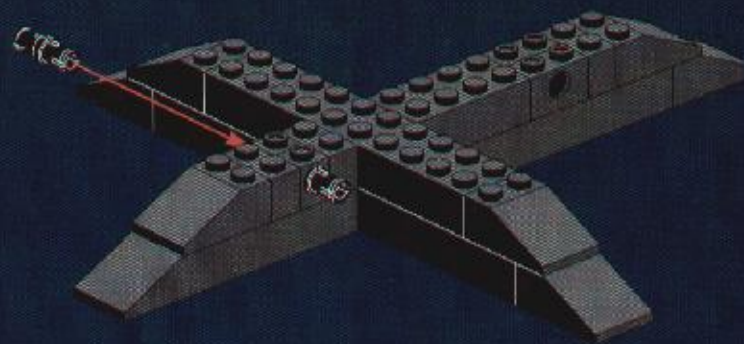
TIE INTERCEPTOR™



3

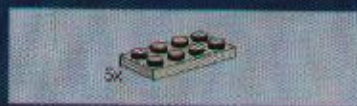
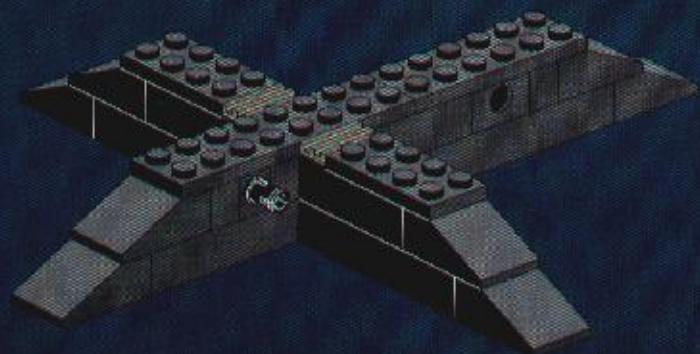


4

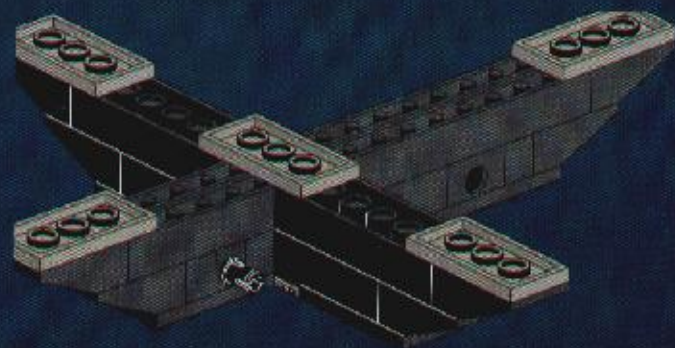




5



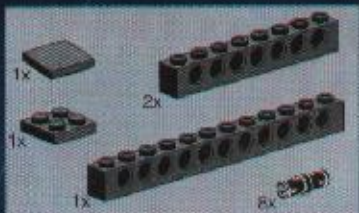
6



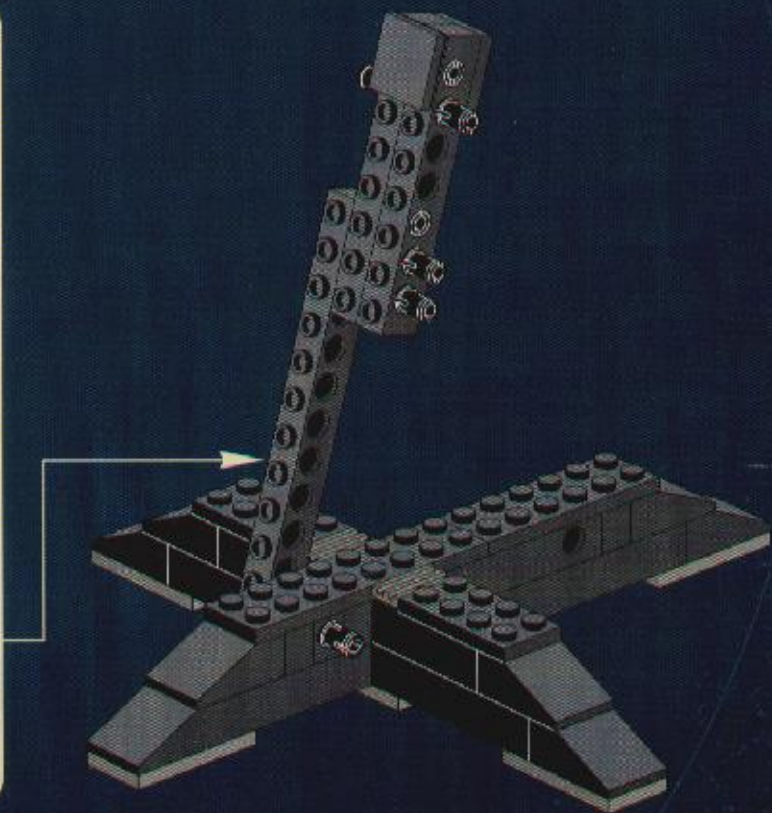
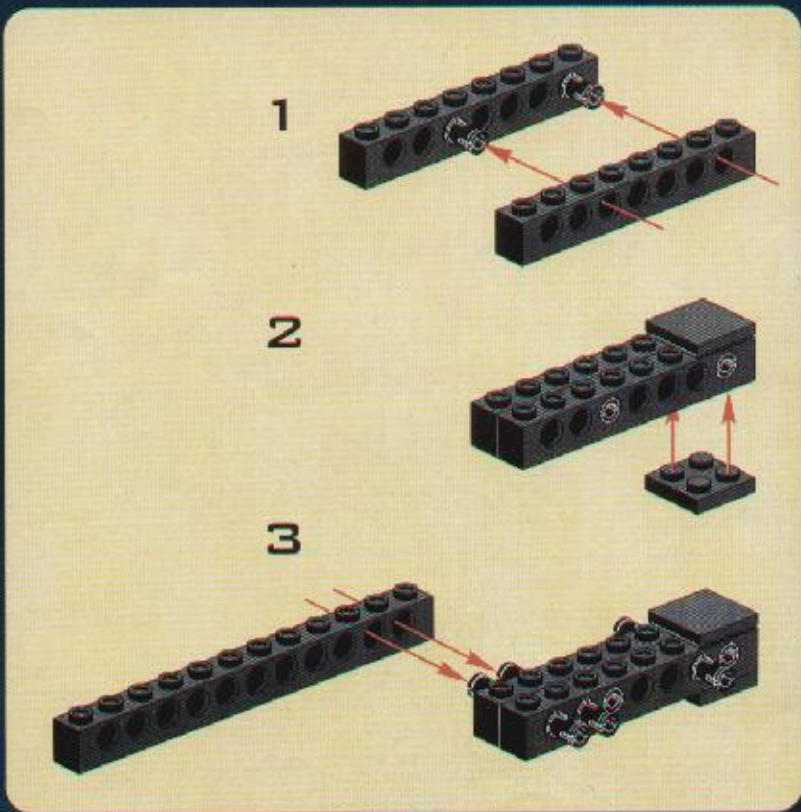


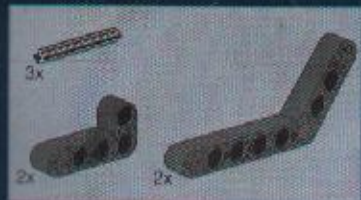
SEPHAR FLEET SYSTEM

TIE INTERCEPTOR™



7





8



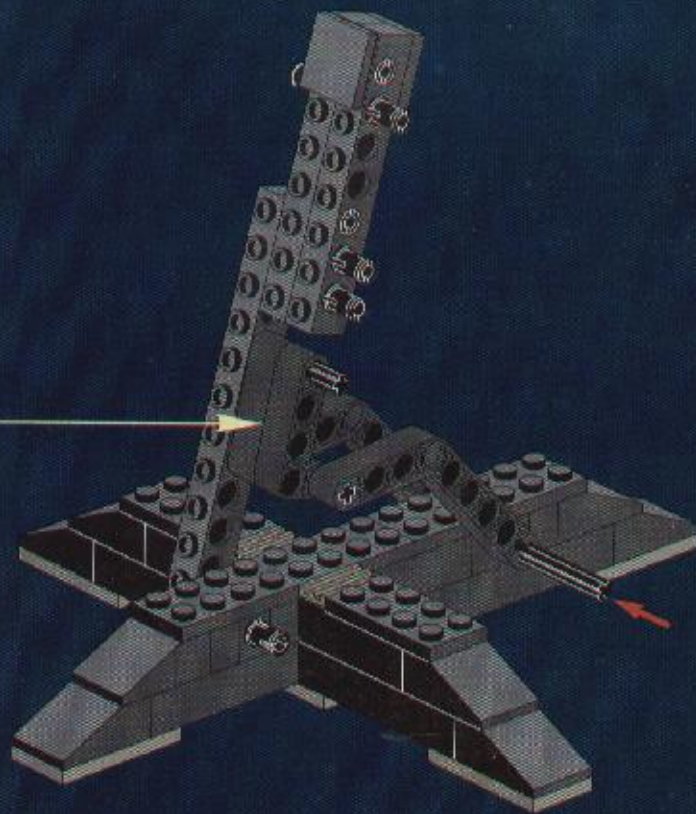
2



2



3



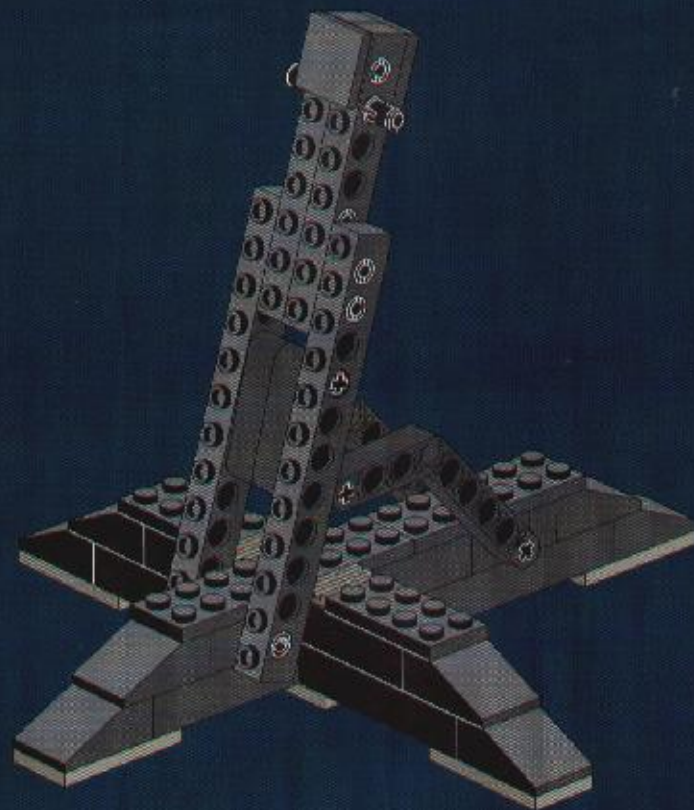


SIENAR FLEET SYSTEMS

TIE INTERCEPTOR™

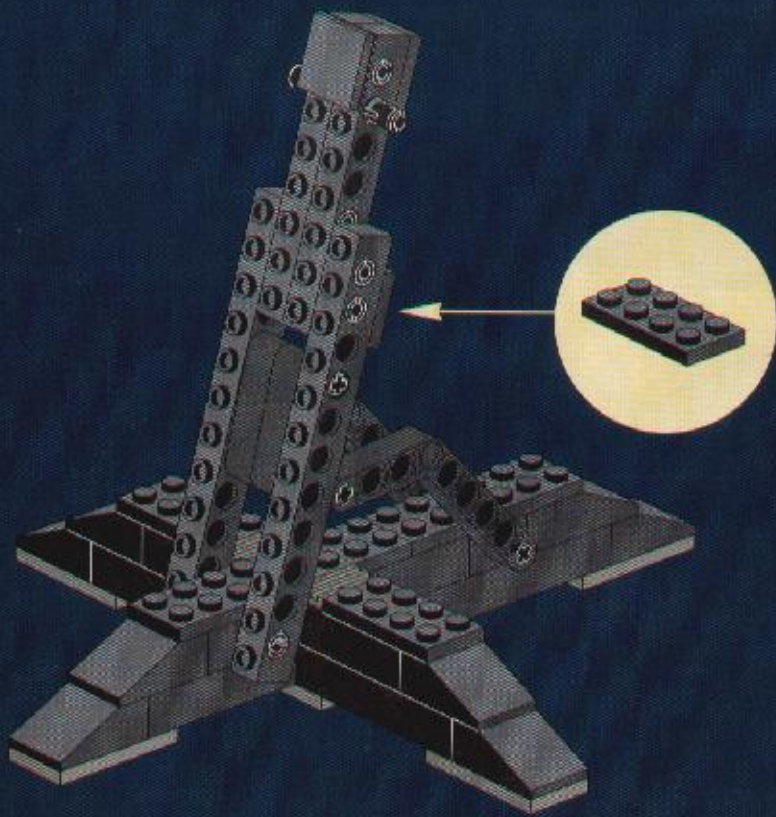


9





10



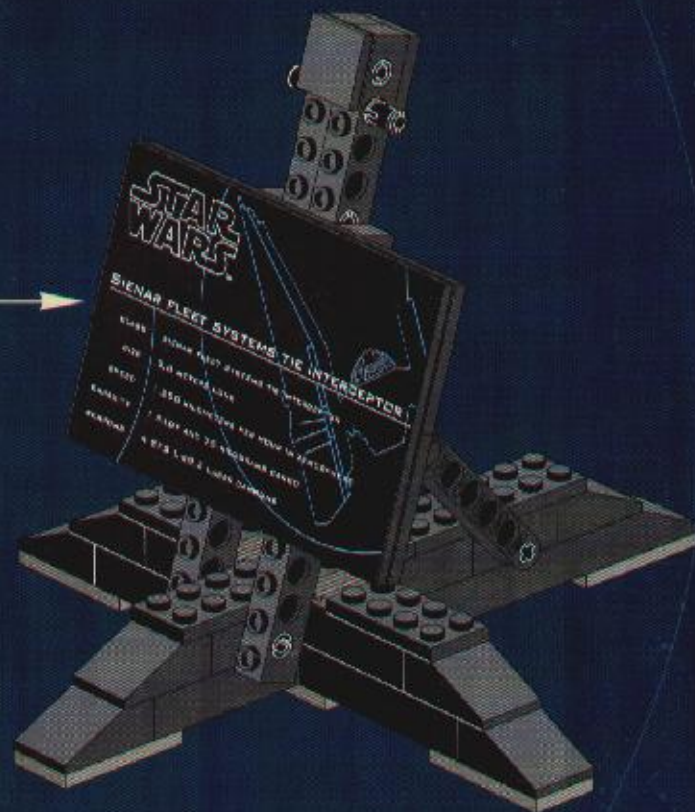
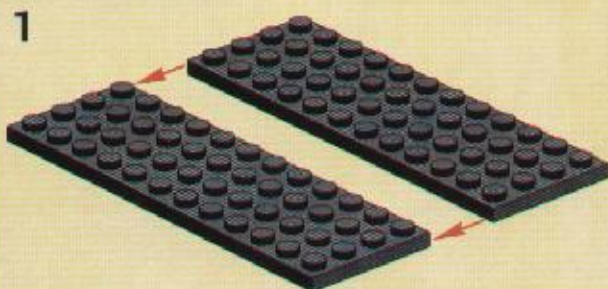


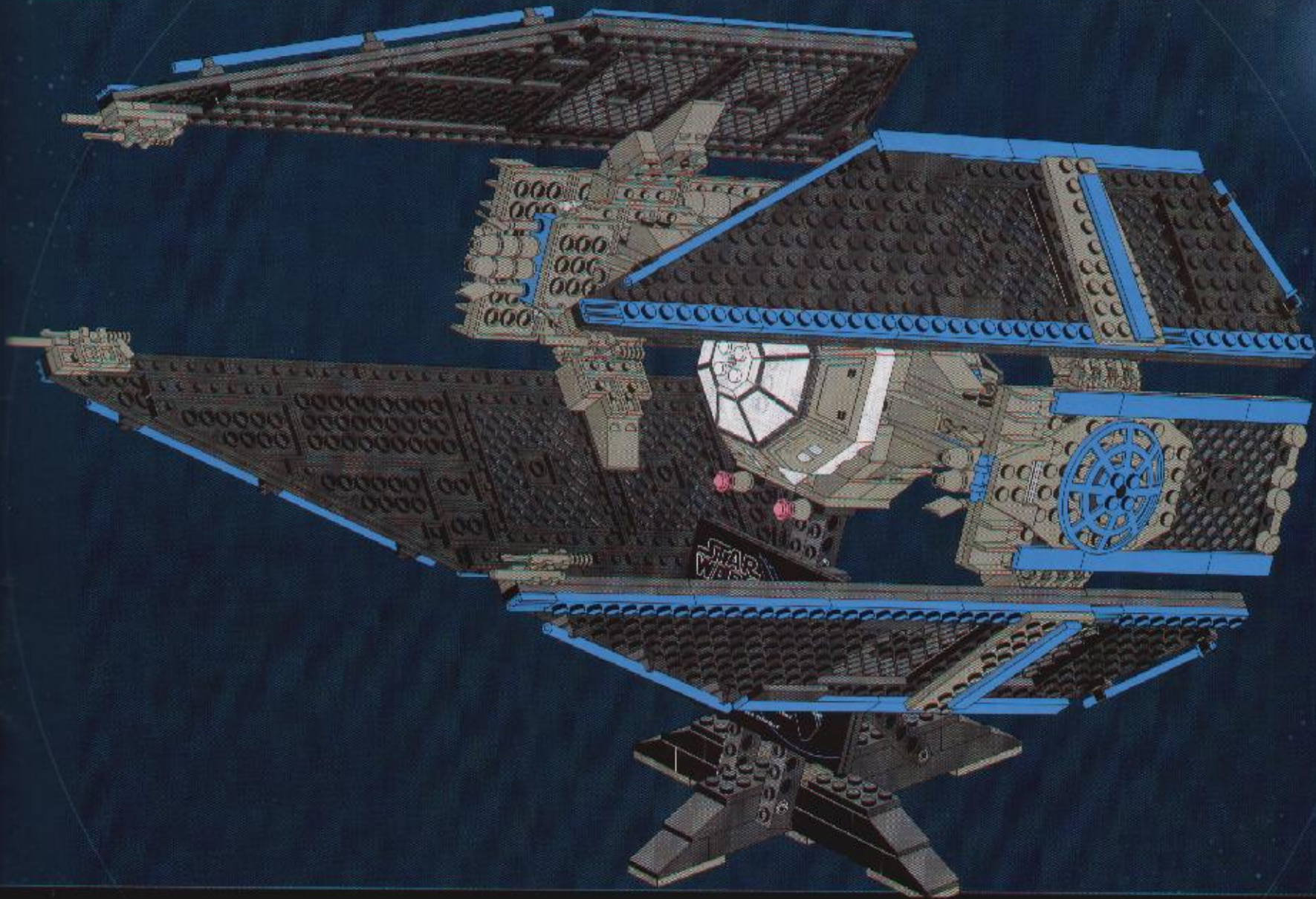
SIENAR FLEET SYSTEMS

TIE INTERCEPTOR



11





SIENAR FLEET SYSTEMS

PRODUCTION HISTORY

- DARTH VADER'S TIE FIGHTER (TIE Advanced X1 Prototype)
- IMPERIAL LANDING CRAFT (SENTINEL-CLASS LANDING CRAFT, MANUFACTURED WITH CYBNUS SPACEWORKS)
- INTERDICTOR CRUISER (IMMOBILIZER 41B)
- LAMBDA-CLASS SHUTTLE
- SCIMITAR ASSAULT BOMBER
- SKIPRAY BLASTBOAT (BAT-12H)
- TIE BOMBER
- TIE DEFENDER
- TIE/D FIGHTER
- TIE FIGHTER (TIE/n)
- TIE INTERCEPTOR™

SIENAR FLEET SYSTEMS INFO

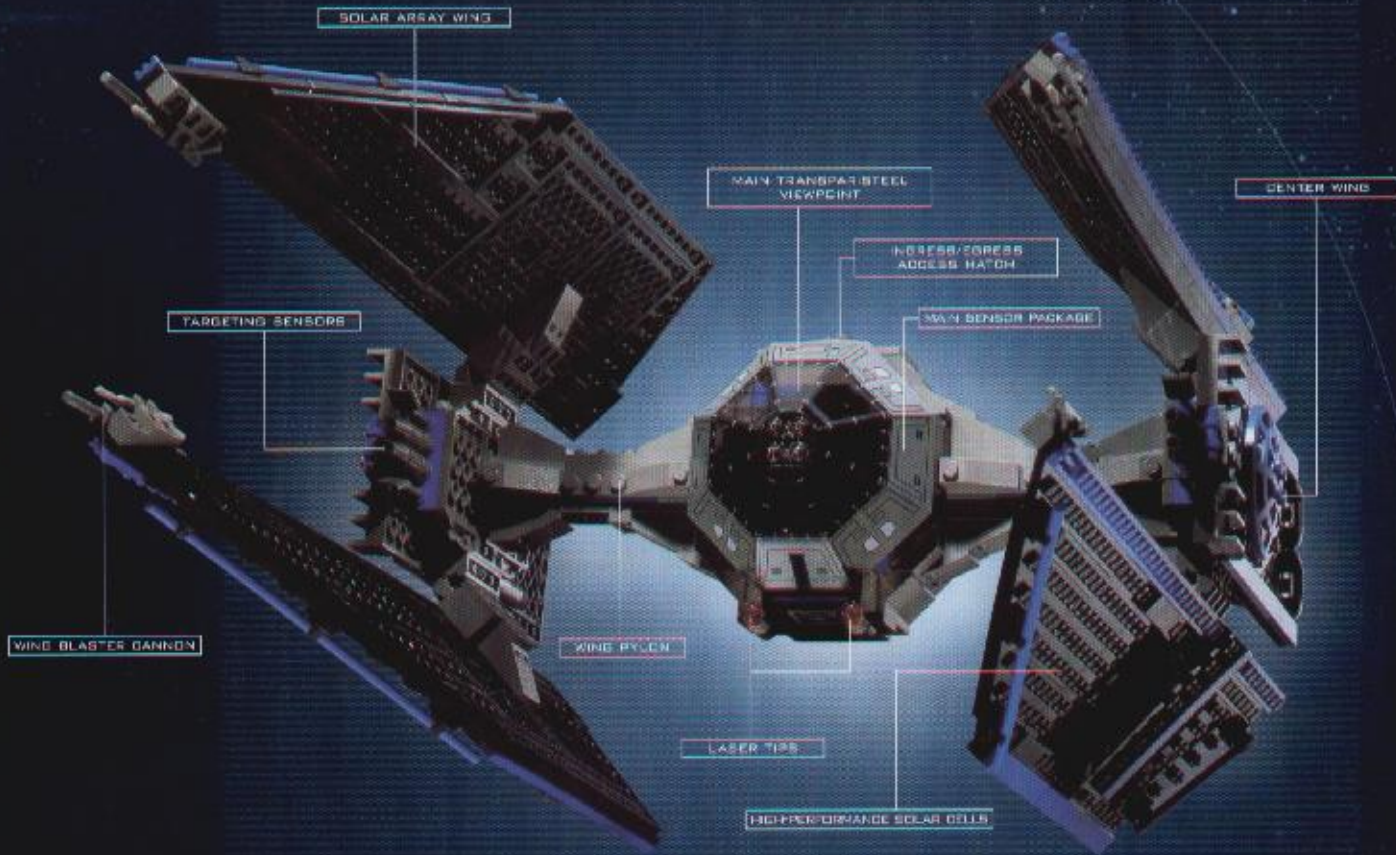
SIENAR FLEET SYSTEMS (SFS) IS A PRIME MILITARY CONTRACTOR AND THE MANUFACTURER OF THE EMPIRE'S TIE FIGHTERS. A SUBSIDIARY OF SANTHE/SIENAR TECHNOLOGIES, SFS IS ACKNOWLEDGED AS ONE OF THE DOMINANT FIGHTER MANUFACTURERS IN THE GALAXY, ALTHOUGH THE SUCCESS OF THE SKIPRAY BLASTBOAT AND THE INTERDICTOR CRUISER MAKES THE COMPANY A MAJOR PLAYER IN THE CAPITAL SHIP MARKET, AS WELL.

SIENAR'S TIE INTERCEPTOR IS THE EMPIRE'S NEWEST ADDITION TO ITS TIE SERIES OF STARFIGHTERS.

AFTER THE DESTRUCTION OF THE DEATH STAR AT THE BATTLE OF YAVIN, IMPERIAL COMMANDERS AND PILOTS CALLED A MEETING WITH TOP IMPERIAL DESIGNERS TO DECIDE HOW BEST TO COUNTER THE UNEXPECTEDLY HIGH LEVEL OF REBEL DARING AND INGENUITY AS EVIDENCED BY THE PERFORMANCE OF REBEL ALLIANCE PILOTS AND MACHINES DURING THE COMBAT. AFTER MUCH DEBATE, THE PANEL CONCLUDED THAT THE EMPIRE NEEDED A FIGHTER THAT WAS FASTER, MORE MANEUVERABLE, AND MORE LETHAL. A FIGHTER, IN SHORT, THAT COULD FAR SURPASS THE REBELLION'S X-WINGS AND Y-WINGS.

THE NUMBER OF TIE INTERCEPTORS THAT HAVE ACTUALLY COME OFF THE ASSEMBLY LINE IS UNKNOWN, BUT SOURCES SPECULATE THAT A SIZEABLE FORCE IS READY TO FLY.

SIENAR'S MOST RECENT DESIGN IS THE SCIMITAR ASSAULT BOMBER WHICH COMBINED THE BEST FEATURES OF THE TIE INTERCEPTOR, THE TIE BOMBER, AND ALLIANCE STARFIGHTERS TO CREATE A DEDICATED ASSAULT BOMBER, YET ANOTHER STUNNING SUCCESS FOR THE COMPANY.



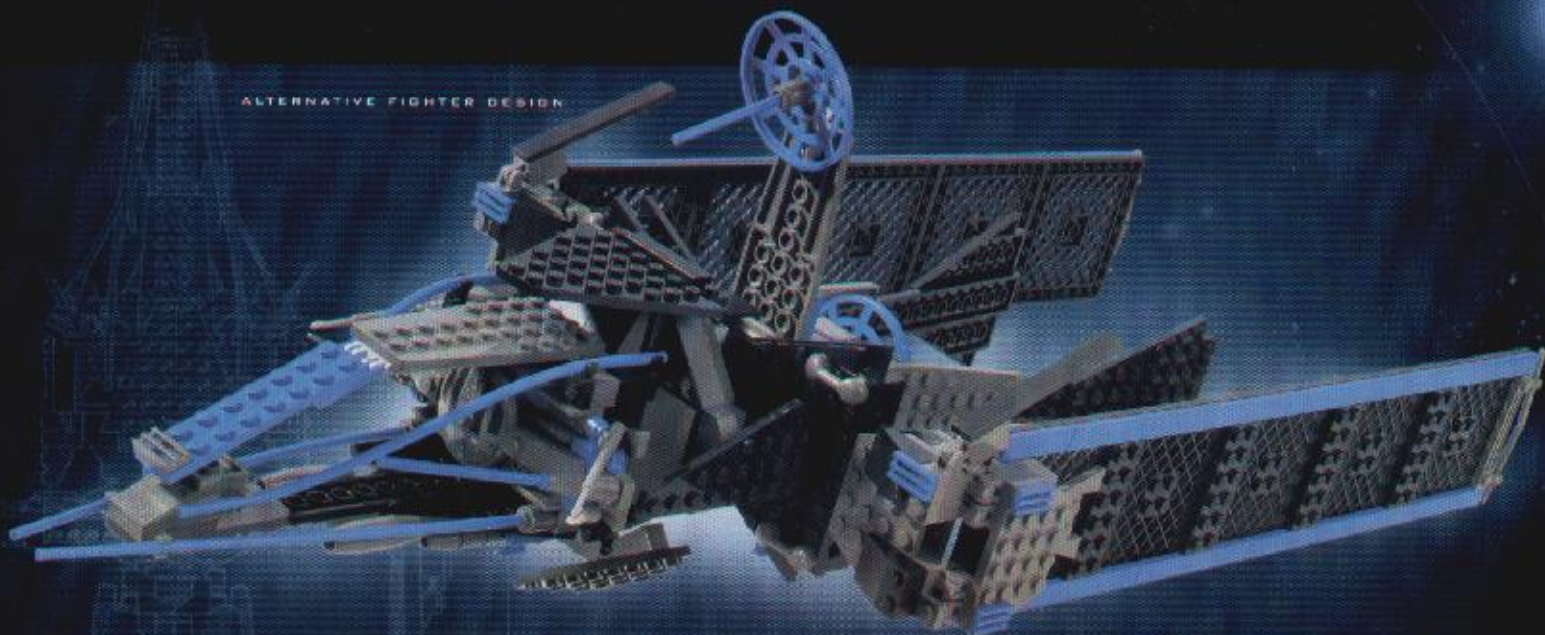
TIE INTERCEPTOR™ INFO

THE MAXIMUM SPEED OF THE NEW TIE INTERCEPTOR WAS ENHANCED BY INCREASING THE SIZE OF THE STANDARD TWIN ION ENGINES AND PROVIDING THE NECESSARY ADDITIONAL POWER INPUT BY INCREASING THE SIZE OF THE SOLAR PANELS. THIS WAS AVOIDED IN THE ORIGINAL TIE SERIES FIGHTERS TO MAXIMIZE PILOT VISIBILITY, BUT IN THE INTERCEPTOR THE PANELS HAVE BEEN STREAMLINED AND RESHAPED. THEY UTILIZE THE NEW BENT-WING FORMAT FOUND ON VADER'S PROTOTYPE CRAFT, BUT ARE DAGGER-SHAPED INSTEAD OF RECTANGULAR TO SOLVE THE VISIBILITY PROBLEM.

FIREPOWER WAS INCREASED BY FORWARD-MOUNTING FOUR LASER CANNONS ON THE TIPS OF THE MODIFIED DAGGER-LIKE SOLAR PANELS AND DISPENSING WITH THE TWIN CHIN-MOUNTED CANNON FOUND ON THE STANDARD TIE FIGHTER.

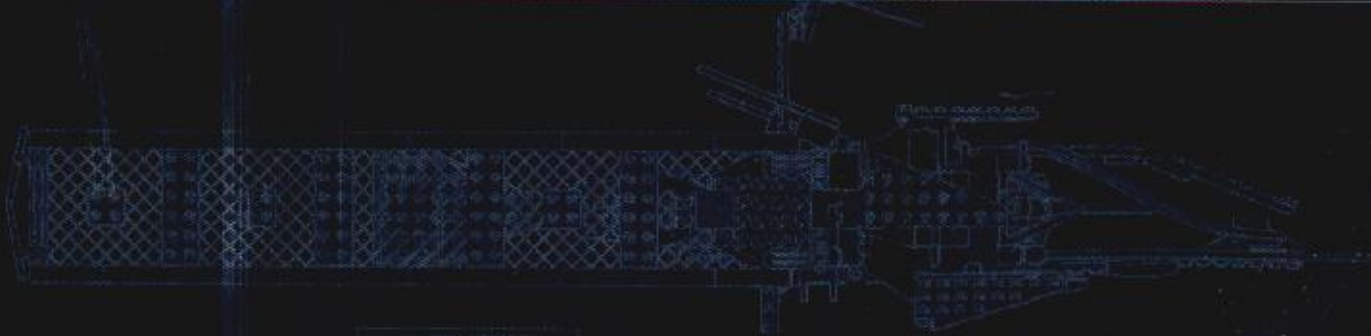
MANEUVERABILITY WAS HARD TO IMPROVE UPON; THE TIE SERIES ALREADY IS ONE OF THE MOST MANEUVERABLE CRAFTS AVAILABLE. BUT A NEW SYSTEM OF ION STREAM PROJECTION WAS DEVELOPED THAT ALLOWS THE PILOT TO EXECUTE TIGHTER TURNS AND ROLLS, AND THE BENT-WING AND LARGER PANELS COMPENSATE FOR ANY LOSS IN STABILIZATION.

ALTERNATIVE FIGHTER DESIGN



WEB LINKUP + FOR TECHNICAL INFO

www.lego.com/ultimate_collector



47. MODEL / 1000000



©2000 LEGO Group.
The LEGO logo and the minifigure are trademarks of the LEGO Group.

© Lucasfilm Ltd. S.T.M. All rights reserved.
Used under authorization.

7 1 8 1



TIE INTERCEPTOR™

ULTIMATE COLLECTOR SERIES

STAR WARS
TIE INTERCEPTOR

SIENAR FLEET SYSTEMS TIE INTERCEPTOR

CLASS: 2-SEAT LIGHT STARFIGHTER
LENGTH: 10.5 METERS
HEIGHT: 3.5 METERS
WEIGHT: 1,200 KILOGRAMS
CREW: 2 PILOTS
WEAPONS: 2 LASER CANNONS

CLASS	2-SEAT LIGHT STARFIGHTER
SPEED	1,000 KILOMETERS PER HOUR
CAPACITY	2 PILOTS 20 TONS OF CARGO
WEAPONS	2 LASER CANNONS
REAL SIZE	10 METERS LONG 3.5 METERS HIGH
AGE	14+ YEARS

SIENAR FLEET SYSTEMS

TIE INTERCEPTOR™

REPRODUCED WITH THE PERMISSION OF LUCASFILM LTD.
© 2000 LUCASFILM LTD. ALL RIGHTS RESERVED.

THIS SET IS A REPRODUCTION OF THE ORIGINAL
STAR WARS TIE INTERCEPTOR. IT IS NOT A COPY
OF THE ORIGINAL. THE ORIGINAL IS A TRADEMARK
OF LUCASFILM LTD. THIS SET IS A REPRODUCTION
OF THE ORIGINAL. IT IS NOT A COPY OF THE ORIGINAL.
REPRODUCED WITH THE PERMISSION OF LUCASFILM LTD.
© 2000 LUCASFILM LTD. ALL RIGHTS RESERVED.



STAR WARS™

SIENAR FLEET SYSTEMS TIE INTERCEPTOR

CLASS	SIENAR FLEET SYSTEMS TIE INTERCEPTOR
SIZE	9.6 METERS LONG
SPEED	1,250 KILOMETERS PER HOUR IN ATMOSPHERE
CAPACITY	1 PILOT AND 75 KILOGRAMS CARGO
WEAPONS	4 SFS L-S9.3 LASER CANNONS

23034/4141698 ©2000 LEGO GROUP

